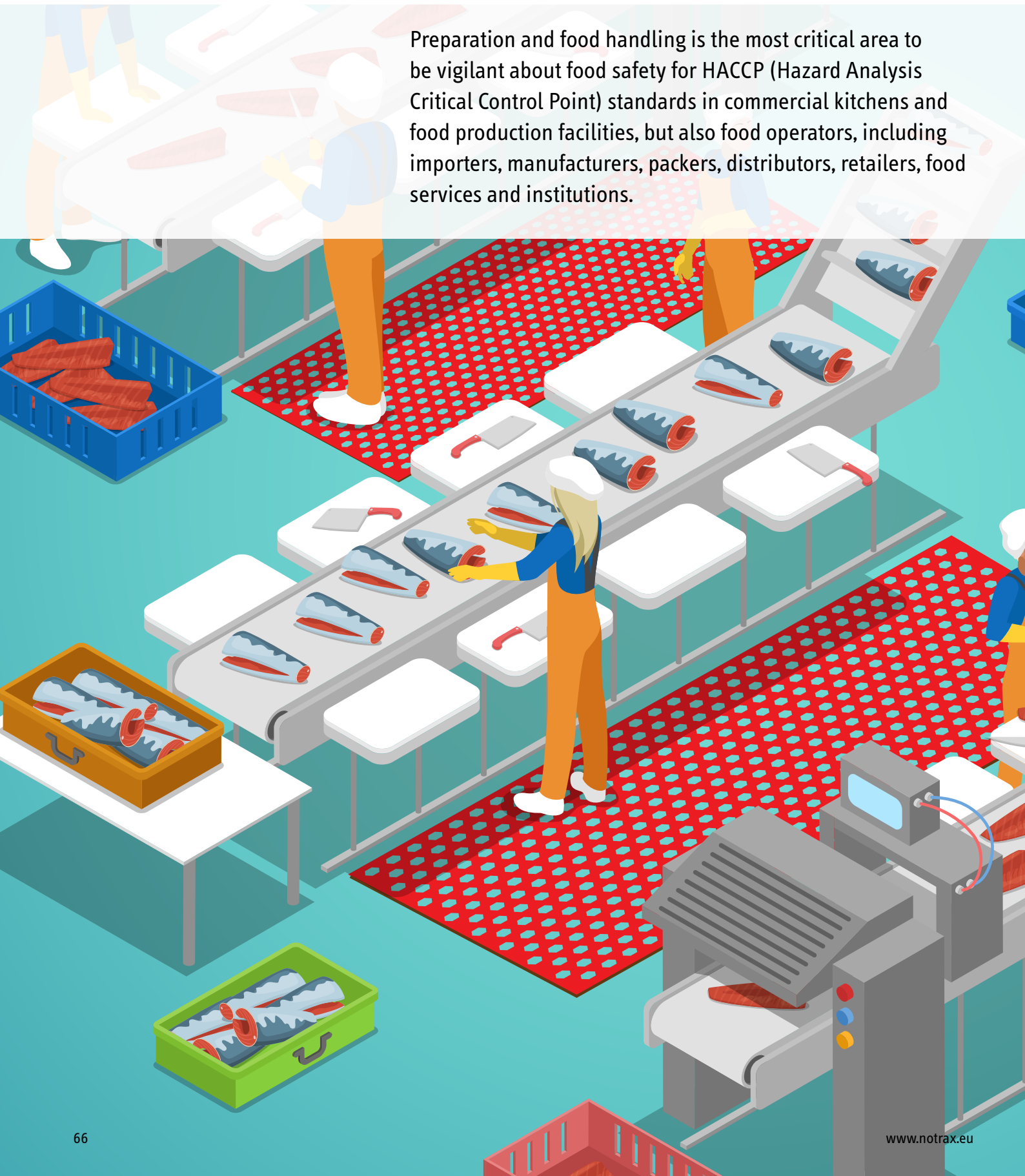


# Food Processing and Matting Solutions

Preparation and food handling is the most critical area to be vigilant about food safety for HACCP (Hazard Analysis Critical Control Point) standards in commercial kitchens and food production facilities, but also food operators, including importers, manufacturers, packers, distributors, retailers, food services and institutions.



The OSHA (Organization for Safety & Health Administration) cites “prolonged standing and repetitive or prolonged motions such as reaching, lifting, and chopping while preparing food in food preparation areas as one of the hazards for kitchen workers. Static postures may occur as workers continuously stand in one position while chopping or preparing food, causing muscle fatigue and pooling of blood in the lower extremities. The OSHA recommends employers to provide anti-fatigue mats in addition to avoiding static postures.

Kitchen workers often work in areas with extreme temperatures, cold for preserving food during cleaning, preparation and packaging, or warm during cooking and serving. Factory floors, particularly in the food processing industry, are often cold and wet. Floor mats elevate standing workers from cold floors. This helps keeping their feet warmer thereby improving the overall perception of well-being.



## 346 Sani-Trax™

This mat cleans and sanitizes shoes, recommended at entrances to all food processing areas. Thousands of flexible fingers provide an automatic scrubbing action that dislodges contaminants from footwear. As traffic passes, rubber tips bend under pressure to immerse soles in disinfectant solution, a double action that keeps contamination from reaching food processing areas. Convenient mat size fits most doorways. Suction cups on underside prevents mat from shifting.

### Specifications:

- Made of 100% tough natural rubber compound for general purpose applications; designed to resist to most chemicals and variations in temperature
- Overall thickness: 19 mm
- Weight: 10.8 kg per m<sup>2</sup>
- Thick surrounding border stands >0,635 cm higher than fingerscrapers to contain liquid disinfectant. Mat holds 4 litres of disinfectant solution. (Tip: use quaternary ammonium, iodine, chlorine or any other sanitizer but always test its concentration. Most sanitizers are concentrated and must be diluted before use in a footbath. Follow label directions for appropriate dilutions)
- Free of DOP, free of DMF, free of ozone depleting substances, free of silicone and free of heavy metals

### Recommended uses:

- At doorways, starter rooms, packaging areas, laboratories, employee locker rooms, break rooms, refuse areas and receiving rooms-any place where spread of contamination needs to be limited

### Size:

- 61 cm x 81 cm



### PRODUCT TESTING





Wet/Dry and Greasy Areas - Food Processing and Food Service Mats

# Rubber Duckboards

Food service anti-fatigue matting provides the optimum combination of comfort, anti-slip surface, drainage capacity, quality and durability, as well as oil/grease resistance. Made of tough rubber compounds, designed to yield a long service life. Aggressive slip resistant surface.

**Recommended uses:**

- Wet or oily/greasy areas – food processing, professional kitchens, bars



## 563RD Sanitop Deluxe™ Red

Non-shifting: heavy weight keeps mat in place. Ergonomic benefit derived from 20 mm thick worker platform. Large drainage holes and raised studs provide aeration and allow fluids and debris to fall through, leaving the surface clear. Bevelled ramps are available to reduce trip hazards. Cleaning with detergent and water-jet is recommended for extended service life.

### Specifications:

- 75% nitrile rubber compound, resistant to oils and greases
- Overall thickness: 20 mm
- Weight: 12.3 kg per m²

### Colours:

- Red

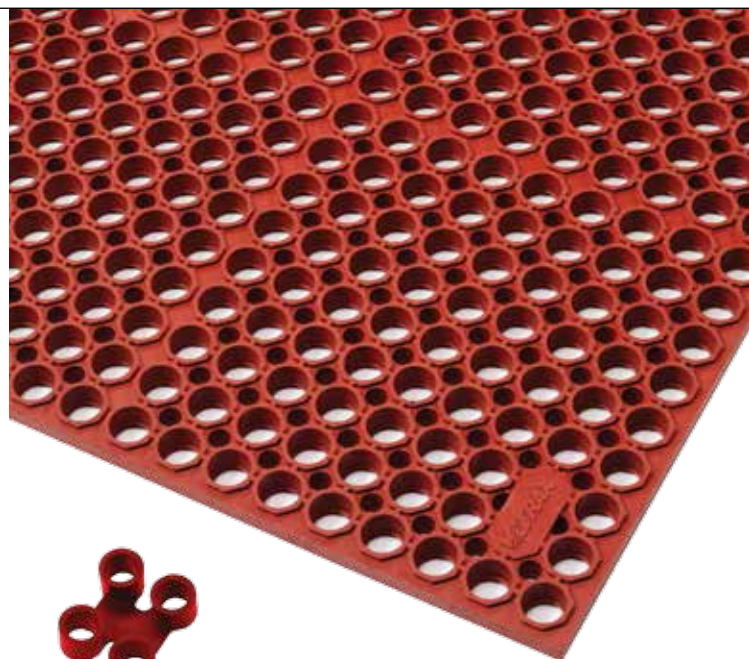
### Stock sizes:

- 91 cm x 152 cm

### Accessories:

- Connectors for widthwise or lengthwise expansion

563 Sanitop Deluxe™ is also available in a natural rubber compound for general purpose applications (page 43).



### PRODUCT TESTING



## 550RD Cushion Ease™ Red

Square snap together units of 91 x 91 cm that can be assembled effortlessly and laid out from wall-to-wall or as island in any direction or shape. Smooth slip resistant surface.

### Specifications:

- 75% nitrile rubber compound, resistant to oils and greases
- Overall thickness: 19 mm
- Weight: 10 kg per m²

### Stock sizes:

- 91 cm x 91 cm

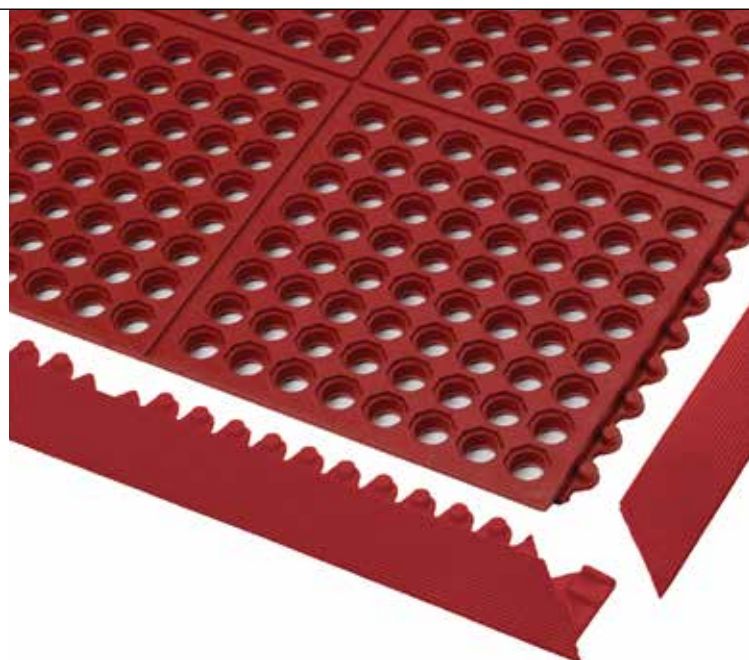
### Colours:

- Red

### Accessories:

- 551 MD Ramp System™ Nitrile male and female bevels in red, yellow and black

See the entire Cushion Ease™ and Cushion Ease Solid™ line (page 21 and 41).



### PRODUCT TESTING





Wet/Dry and Greasy Areas - Food Processing and Food Service Mats

# Ergonomy on Slippery Floors

These mats are designed to meet individual food industry requirements. Ergonomic benefit derived from a thick worker platform made of a tough yet resilient nitrile rubber compound that is resistant to vegetable oils and greases. Anti-slip surface provides sure footing. Bevelled edges prevent tripping on the mat. Cleaning with detergent and water-jet is recommended for extended service life.



## 458 Skystep™ Red

Standalone rubber mats have a gritted surface pattern with ergonomic bubble to provide maximum fatigue relief while maintaining its anti-slip properties. The mat is designed to suction to the ground to prevent the mat from shifting, and trap air in its chambers to create an ultimate cushioning effect while keeping the mat lightweight.

### Specifications:

- 75% nitrile rubber compound, resistant to oils and greases
- Overall thickness: 13 mm
- Weight: 10 kg per m<sup>2</sup>

### Recommended uses:

- Dry greasy areas – food processing, food packaging, food preparation areas and bars

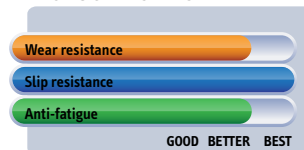
### Stock sizes:

- 60 cm x 90 cm
- 90 cm x 120 cm
- 90 cm x 150 cm

458 Skystep™ Red is also available in a natural rubber compound for general purpose applications (page 33).



### PRODUCT TESTING



## 562RD Sanitop™ Red

Provides basic comfort and traction in wet or greasy areas. Large drainage holes and raised studs provide aeration and allow fluids and debris to fall through, leaving the surface clear. Aggressive slip resistant surface.

### Specifications:

- 75% nitrile rubber compound, resistant to oils and greases
- Overall thickness: 12.7 mm
- Weight: 8 kg per m<sup>2</sup>

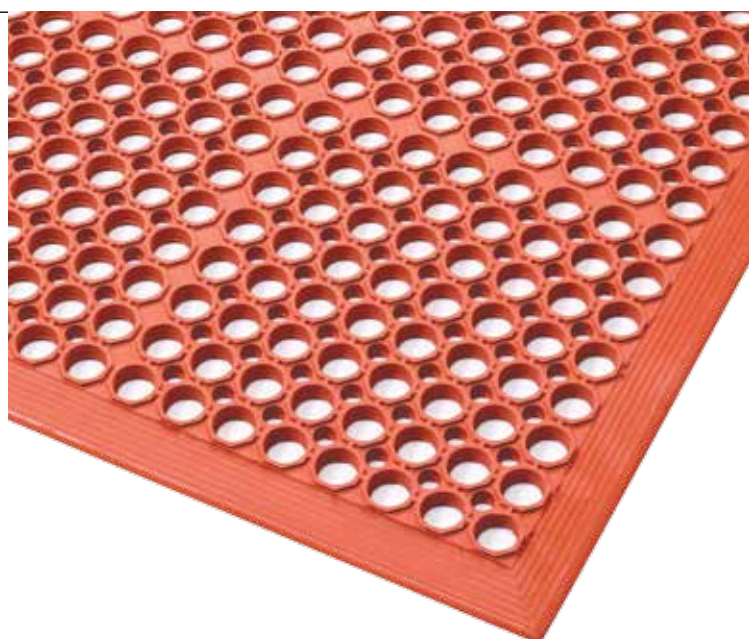
### Recommended uses:

- Wet or oily/greasy areas – food processing, professional kitchens, cooking lines, food preparation areas, bars and cleaning areas

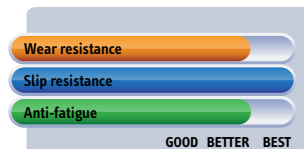
### Stock sizes:

- 91 cm x 152 cm
- 91 cm x 297 cm
- 91 cm x 594 cm

562 Sanitop™ is also available in a natural rubber compound for general purpose applications. (page 43).



### PRODUCT TESTING





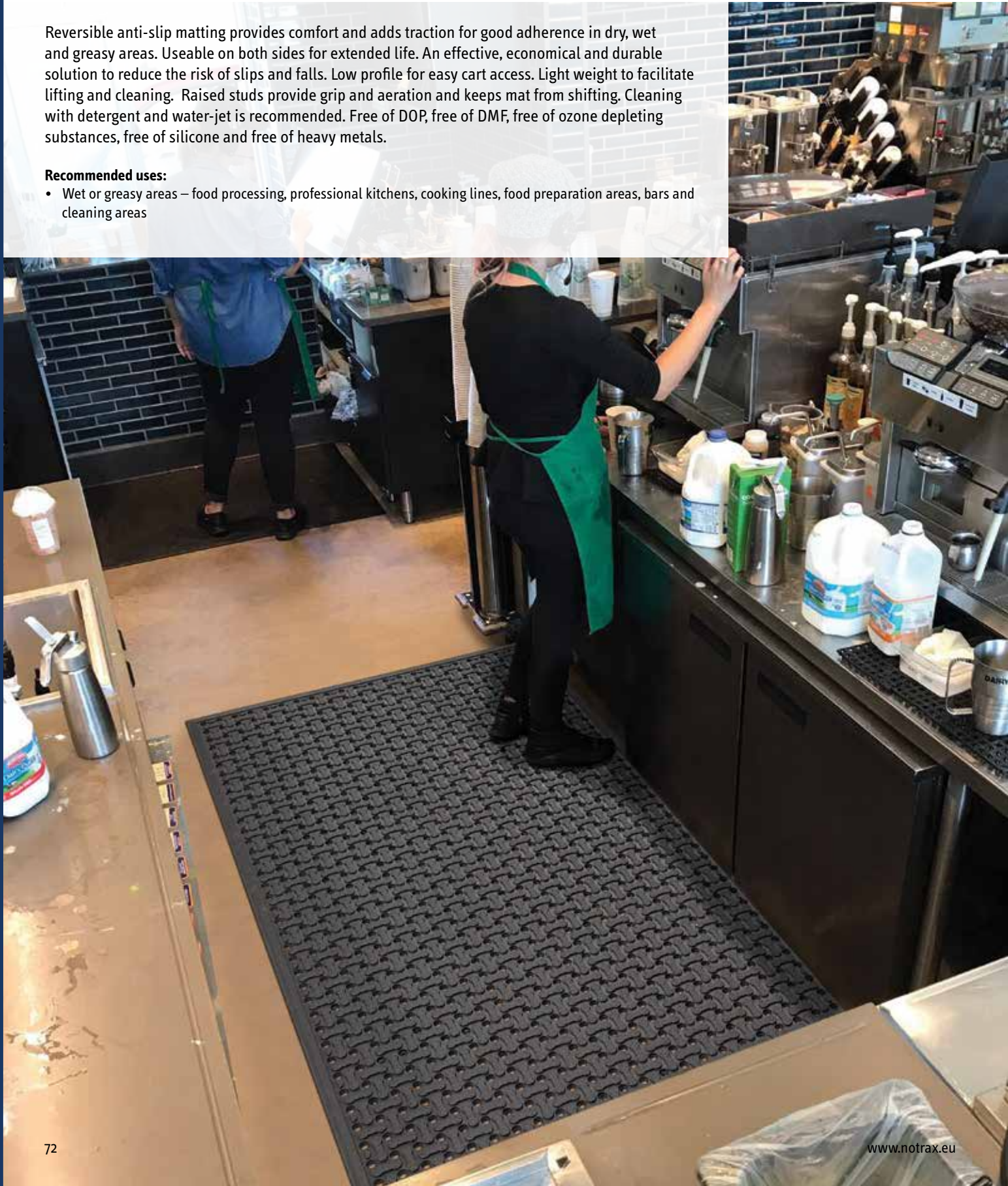
Wet/Dry and Greasy Areas - Food Processing and Food Service Mats

# Reversible Anti-Slip Mats

Reversible anti-slip matting provides comfort and adds traction for good adherence in dry, wet and greasy areas. Useable on both sides for extended life. An effective, economical and durable solution to reduce the risk of slips and falls. Low profile for easy cart access. Light weight to facilitate lifting and cleaning. Raised studs provide grip and aeration and keeps mat from shifting. Cleaning with detergent and water-jet is recommended. Free of DOP, free of DMF, free of ozone depleting substances, free of silicone and free of heavy metals.

**Recommended uses:**

- Wet or greasy areas – food processing, professional kitchens, cooking lines, food preparation areas, bars and cleaning areas



## 566 Superflow® XT

Reversible anti-slip mat is remarkably comfortable and usable on both sides for extended life. Its perforated woven surface is slip resistant surfaces while allowing instant evacuation of liquids in wet areas. Low profile for easy cart access and lightweight to facilitate lifting and cleaning.

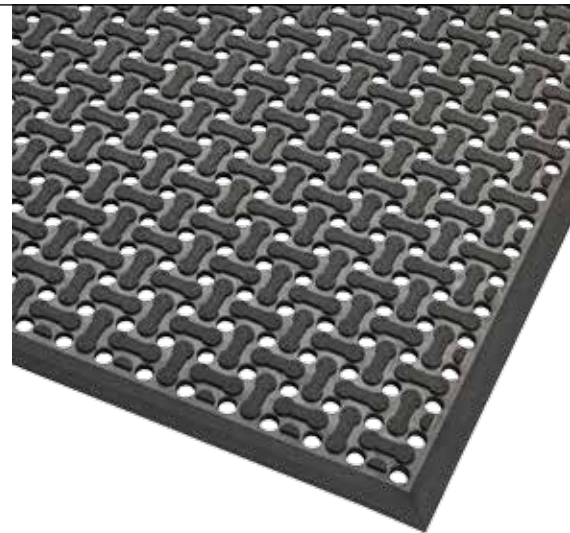
### Specifications:

- 100% natural rubber compound for general purpose applications
- Overall thickness 8.5 mm
- Weight 8.8 kg per m<sup>2</sup>

### Stock sizes:

- 60 cm x 90 cm
- 91 cm x 152 cm
- 122 cm x 183 cm

### PRODUCT TESTING



## 567 Superflow® XT Nitrile

Oil resistant reversible anti-slip mat is remarkably comfortable and usable on both sides for extended life. Its perforated woven surface is slip resistant surfaces while allowing instant evacuation of liquids in wet areas. Low profile for easy cart access and lightweight to facilitate lifting and cleaning.

### Specifications:

- 100% nitrile rubber compound is resistant to most industrial oils
- Overall thickness 8.5 mm
- Weight 8.8 kg per m<sup>2</sup>

### Stock sizes:

- 60 cm x 90 cm
- 91 cm x 152 cm
- 122 cm x 183 cm

### PRODUCT TESTING



## T23RD Multi Mat II®

Drainage holes for instant evacuation of fluids allow debris to fall through, leaving the surface clear.

### Specifications:

- 75% nitrile rubber compound, resistant to oils and greases
- Overall thickness: 9.5 mm
- Weight: 9.9 kg per m<sup>2</sup>
- Slip resistance R10 measured according to DIN 51130

### Colours:

- Black, Red

### Full rolls:

- 60 cm, 91 cm and 122 cm widths

### Stock sizes:

- 60 cm x 122 cm
- 60 cm x 244 cm
- 91 cm x 122 cm
- 91 cm x 244 cm
- 122 cm x 122 cm
- 122 cm x 244 cm

### PRODUCT TESTING

