

Modular LED Systems

Light With Power.





Shuttle One™ is the leading solid-state modular luminaire solution for high bay applications



Discover the lighting difference

Shuttle One™ products are designed to deliver a tailored solution for your high bay applications that require efficient, high output and dependable lighting. This unique modular lighting system is designed to deliver quality and cost-effective lighting for many high lumen applications. It is also built to withstand harsh environments including wet and frigid locations.

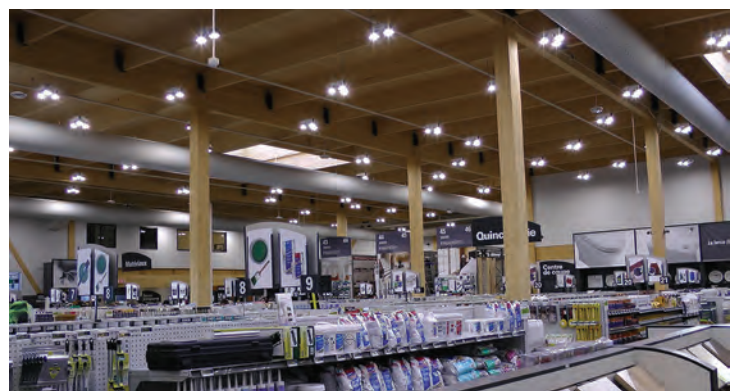
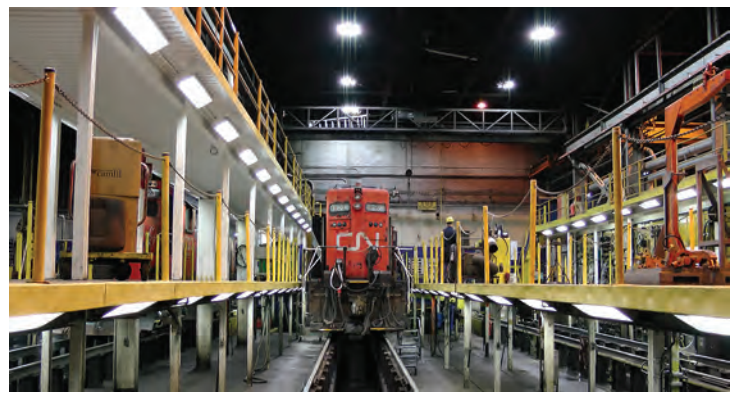
The Shuttle One™:

- ❖ Replaces traditional high bay lighting systems.
- ❖ Consumes less than half the wattage of conventional lights.
- ❖ Has the Industries best lifetime LED lumen maintenance with >70% at 250 000 hours.
- ❖ Creates a uniform and consistent white light, with up to 68 000 lumens
- ❖ Enables flexibility and ease of maintenance through a modular design.
- ❖ Is intended for installation heights from 20ft up to 120ft.
- ❖ Delivers up to 65% in energy savings.
- ❖ Is 100% recyclable and include an exchange program.
- ❖ Includes a 5-year limited warranty covering all components and manufacturing.

Application examples

The shuttle one is Ideal for large indoor spaces with mounting heights ranging from 20ft up to 120ft. Examples of installations include :

- Aircraft hangars
- Arenas
- Gymnasiums
- Commercial applications
- Industrial sites
- Agricultural structures
- Large manufacturing facilities
- Showrooms
- Warehouses
- Cold storage
- Megastores
- Mining industries



LED Technology

Chip On Board (COB) LED technology delivers a high performance, compact and cost-effective solid-state lighting solution. It combines the high-efficiency, long life and reliability benefits of LEDs with the high light output levels of HID light sources. Our products are designed using Bridgelux COB LEDs to deliver high lumen output levels and a long service life that dramatically reduces replacement and maintenance costs.

Driver Technology

The electronic drivers are preset to precise AC to DC current conversion required to achieve the LEDs maximum power potential. All drivers are equipped with 0-10V dimming and compatible with most occupancy sensors.

Thermal Management

Light output, lifetime and color stability are all directly related to operating temperature. The thermal management of the Shuttle One product line is ensured through custom designed heat sinks for optimal heat dissipation. The innovative design guarantees long life and reliability of the LEDs and drivers.

Energy savings

	Shuttle One 2-modules		400W Metal Halide
Choice of LED (Bridgelux)	RS	VERO	
System wattage	189W	160W	454W
Annual operating hours	4380	4380	4380
Annual energy consumption	827kW	700kW	1988kW
Electricity rate Québec*	0.07\$/kwh	0.07\$/kwh	0.07\$/kwh
Annual energy cost**	5800\$	4900\$	13900\$
Annual energy savings	8100\$	9000\$	-
Annual savings***	58%	65%	-

*The average electricity rate for Canada is 0.10\$/kwh and United States is 0.16\$/kwh

**Based on 100 lamps per space

***Additional 10% savings could easily be achieved through lighting control system such as dimmers and occupancy sensors.



Features

- Modular design lighting system
- High lumen output & high efficiency
- Long service life
- Quick installation
- Solid-state light source
- Dimming capability
- RoSH compliant & lead free
- UL certified in the US & Canada
- IP66 rated
- Shock and vibration resistant
- +40°C to -40°C

Benefits

- Optimum design flexibility, customizable
- Excellent ROI - up to 65% energy savings***
- Minimum installation time and cost
- No IR/UV, instant on/off, easily dimmed
- Uniform illumination
- No hazardous waste and disposal issues
- 100% recyclable
- Full safety compliance
- Suitable for damp location

Options

- Available in 2, 3, 4 and 6 modules configurations
- Available with customizations
- Lumen outputs ranging from 20 000 to 68 000 lumens
- Available in 120-277V VAC and 347 VAC
- Clear, frosted glass or drop lense.



9320 Boul. St-Laurent,
suite 100, Montréal (Québec)
Canada H2N 1N7
P.: 514.687.9114 F.: 514.904.1592
www.modularledsystems.com
contact@modularledsystems.com