

Signal Towers · completely
pre-assembled · KOMPAKT



Overview Signal Towers • pre-assembled

Pre-assembled Signal Towers

NEW

698/699 KOMPAKT 37



- Ø 37.5 mm
- Protection rating IP 65
- 2-5 tiers
- With or without buzzer

Page 73

697 KOMPAKT 71



- Ø 70 mm
- Protection rating IP 65
- 2 or 3 tiers

Page 77

694 deSIGN 42



- Ø 42 mm
- Protection rating IP 65
- 2 or 3 tiers
- High quality stainless steel housing

Page 82

691 FlatSIGN



- 195 x 105 x 45 mm
- Protection rating IP 65
- With curved front
- 160° signal visibility

Page 84

690 VarioSIGN



- 62 x 220 x 90 mm
- Protection rating IP 65
- Electronic modularity
- Unique Design

Page 86

695 CleanSIGN



- IP 67/69 k
- For base and bracket mounting

Page 90

Size comparison · Signal Towers



Sound



The sounds can be played from our website www.werma.com under the heading "Signal Towers"

TIP

The Signal Devices Site on the internet: www.werma.com

On the signal tower pages of www.werma.com use the selection tool „Configurator“ to select the Kompakt 37 signal tower according to your requirements. With the help of intuitive questions and pictures you will be able to make your choice with just a few mouse clicks.



NEW

KOMPAKT 37

Signal Towers · completely pre-assembled · KOMPAKT 37



The complete Signal Tower Solution

The slim-line LED signal tower is available with black housing and coloured lens or in a metallic colour with clear lens.

In the version with coloured lens, the LEDs light up within the tower in the colour of the lens giving an intensive colour effect whilst the clear lens give clear colour signal even in bright sunlight.

The clear lenses ensure an unequivocal signal even in bright light conditions thus ruling out errors even in bad light conditions. The aesthetically pleasing and innovative plastic housing with metallic coating also makes the signal towers an excellent choice in areas where the optical effect is of importance.

Additional warning can be given with the optional siren built into the top of the signal tower. With an output of 85 dB the siren gives an immediate and clear warning of potential danger, and the tower carries a protection rating of IP 65.



The advantages at a glance

- ✓ Completely pre-assembled LED Signal Tower
- ✓ Simplified ordering - the complete tower can be ordered with just one number
- ✓ Life duration of up to 50,000 hours
- ✓ High protection rating IP 65
- ✓ Up to 5 optical and one audible element
- ✓ Available with M12 plug or cable connection



This is how to select your signal tower

► STEP 1

Select the signal tower of your choice with or without buzzer, with the appropriate connection, housing colour, voltage and number of tiers.

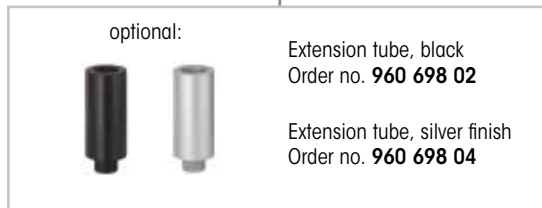
Part numbers can be found on pages 74 and 75.



- 2-5 tiers
- With or without buzzer
- M12 plug or cable
- Black or silver finish

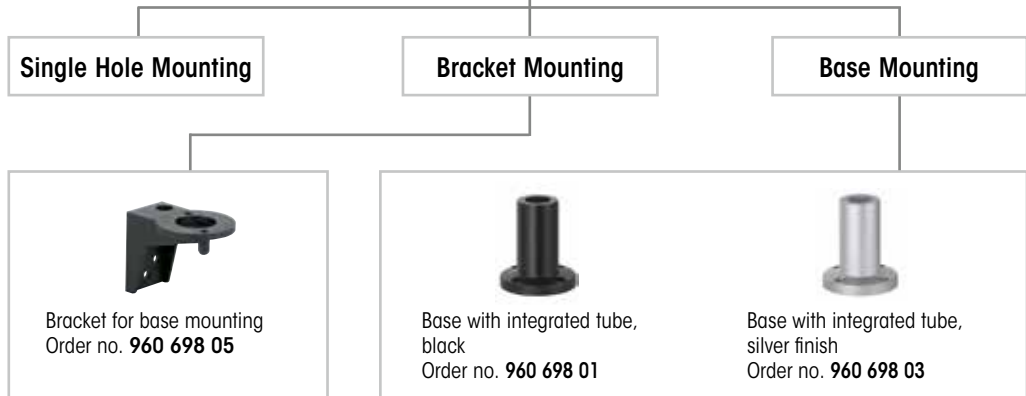
► STEP 2

Select up to two extension tubes.



► STEP 3

Select the appropriate fixing accessories for your application, using for example a tube and base or a bracket mount.



► STEP 4

Where appropriate, select the bracket and the contact box.



TIP

The Signal Devices Site on the internet: www.werma.com

On the signal tower pages of www.werma.com use the selection tool „Configurator“ to select the Kompakt 37 signal tower according to your requirements. With the help of intuitive questions and pictures you will be able to make your choice with just a few mouse clicks.





- Pre-assembled signal tower with max. 5 tiers
- With or without buzzer
- LED permanent light
- Available with M12 plug or cable connection
- Also available in metal finish and clear lens

i TECHNICAL SPECIFICATIONS:

Life duration up to 50,000 hrs

Dimensions (Ø x Height):	2 tier:	37.5 mm x 127.5 mm
	3 tier:	37.5 mm x 161.5 mm
	4 tier:	37.5 mm x 195.5 mm
	5 tier:	37.5 mm x 229.5 mm
	(Protrusion from panel)	
Housing:	PC	
Fixing:	Single hole mounting for Ø 22.5 mm (M22 x 1.5 mm) Base or bracket mounting (accessory)	
Connection:	Cable connection:	Cable, 2 m long,
	Plug connection:	M12 Plug (2/3 tier: 5 pole; 4/5 tier: 8 pole)
Current consumption:	50 mA per tier / buzzer	
Nut and seal included in assembly.		

🛒 ORDER SPECIFICATIONS:

KOMPAKT 37 with coloured lens and buzzer (1))

		Connection	24 V AC/DC	12 V AC/DC
2 tier	green/red	Cable	699 120 75	699 120 74
	yellow/red	Cable	699 130 75	699 130 74
	green/red	Plug	699 220 75	699 220 74
	yellow/red	Plug	699 230 75	699 230 74
3 tier	green/yellow/red	Cable	699 110 75	699 110 74
	green/yellow/red	Plug	699 210 75	699 210 74
4 tier	clear/green/yellow/red	Cable	699 140 75	
	blue/green/yellow/red	Cable	699 150 75	
	clear/green/yellow/red	Plug	699 240 75	
	blue/green/yellow/red	Plug	699 250 75	
5 tier	blue/clear/green/yellow/red	Cable	699 160 75	
	blue/clear/green/yellow/red	Plug	699 260 75	

KOMPAKT 37 with coloured lens and without buzzer

		Connection	24 V AC/DC	12 V AC/DC
2 tier	green/red	Cable	698 120 75	698 120 74
	yellow/red	Cable	698 130 75	698 130 74
	green/red	Plug	698 220 75	698 220 74
	yellow/red	Plug	698 230 75	698 230 74
3 tier	green/yellow/red	Cable	698 110 75	698 110 74
	green/yellow/red	Plug	698 210 75	698 210 74
4 tier	clear/green/yellow/red	Cable	698 140 75	
	blue/green/yellow/red	Cable	698 150 75	
	clear/green/yellow/red	Plug	698 240 75	
	blue/green/yellow/red	Plug	698 250 75	
5 tier	blue/clear/green/yellow/red	Cable	698 160 75	
	blue/clear/green/yellow/red	Plug	698 260 75	

12 V-Versions: available in May 2014



Two tier Kompakt 37 with integral tube and base (accessory)



Three tier Kompakt 37 with bracket (accessory)

NEW



The height of the KOMPAKT 37 can be increased by max. 160 mm with the use of extension tubes, ensuring optimum visibility



ORDER SPECIFICATIONS:

KOMPAKT 37 in silver finish with clear lens and buzzer

		Connection	24 V AC/DC	12 V AC/DC
2 tier	green/red	Cable	699 320 75	699 320 74
	yellow/red	Cable	699 330 75	699 330 74
	green/red	Plug	699 420 75	699 420 74
	yellow/red	Plug	699 430 75	699 430 74
3 tier	green/yellow/red	Cable	699 310 75	699 310 74
	green/yellow/red	Plug	699 410 75	699 410 74
4 tier	clear/green/yellow/red	Cable	699 340 75	
	blue/green/yellow/red	Cable	699 350 75	
	clear/green/yellow/red	Plug	699 440 75	
	blue/green/yellow/red	Plug	699 450 75	
5 tier	blue/clear/green/yellow/red	Cable	699 360 75	
	blue/clear/green/yellow/red	Plug	699 460 75	

KOMPAKT 37 in silver finish with clear lens and without buzzer

		Connection	24 V AC/DC	12 V AC/DC
2 tier	green/red	Cable	698 320 75	698 320 74
	yellow/red	Cable	698 330 75	698 330 74
	green/red	Plug	698 420 75	698 420 74
	yellow/red	Plug	698 430 75	698 430 74
3 tier	green/yellow/red	Cable	698 310 75	698 310 74
	green/yellow/red	Plug	698 410 75	698 410 74
4 tier	clear/green/yellow/red	Cable	698 340 75	
	blue/green/yellow/red	Cable	698 350 75	
	clear/green/yellow/red	Plug	698 440 75	
	blue/green/yellow/red	Plug	698 450 75	
5 tier	blue/clear/green/yellow/red	Cable	698 360 75	
	blue/clear/green/yellow/red	Plug	698 460 75	

12 V-Versions: available in May 2014



ACCESSORIES:

Base with integrated tube, black	960 698 01
Extension tube, black	960 698 02
Base with integrated tube, silver finish	960 698 03
Extension tube, silver finish	960 698 04
Fixing bracket	960 698 05
Cable 5 m with M12 plug (5 pole)	960 693 05
Cable 5 m with M12 plug (8 pole)	960 000 47
Cable 5 m with M12 connector and plug (8 pole)	960 000 46

Further accessories can be found on page 79.



TECHNICAL DIAGRAMS:

see page 312



Signal Towers · completely pre-assembled · KOMPAKT 37



KOMPAKT

The complete Signal Tower Solution

Signal Towers · completely pre-assembled · KOMPAKT 71



KOMPAKT 71

With the help of these compact LED signal towers two or three defined status warnings can be displayed with only one signal device. The tower is very economical due to the long life duration of up to 50,000 hours and low current consumption.

Also available with USB Interface



The advantages at a glance



- ✓ Completely pre-assembled LED Signal Tower
- ✓ Simplified ordering - the complete tower can be ordered with just one number
- ✓ Life duration of up to 50,000 hours
- ✓ High protection rating IP 65



- Completely pre-assembled
- Three colour combinations
- 70 mm diameter



Base with tube (accessory)

Life duration
up to 50,000 hrs

TECHNICAL SPECIFICATIONS:

Dimensions (Ø x Height):	2 tier: 70 x 140 mm 3 tier: 70 x 175 mm
Housing:	Housing parts: PC Terminal element: PA fibreglass, high-impact
Fixing:	Base/Bracket mounting Tube mounting (accessory)
Connection:	Screw terminal max. 2.5 mm ²
Cable entry:	Cable diameter max. 14 mm
Current consumption:	40 mA per tier

ORDER SPECIFICATIONS:

KOMPAKT 71

		Mounting	24 V DC
2 tier	red/green	Base/bracket mounting	697 010 55
		Tube mounting	697 410 55
3 tier	red/yellow/green	Base/bracket mounting	697 000 55
		Tube mounting	697 400 55

KOMPAKT 71 with negative logic (common +)

		Mounting	24 V DC
3 tier	red/yellow/green	Base/bracket mouting	697 100 55
		Tube mounting	697 500 55

ACCESSORIES:

see page 79

TECHNICAL DIAGRAMS:

see page 312

See note on page 347

CE	EAC	2 tier 170 g	3 tier 200 g	IP65	+50°C -20°C	PLC
----	-----	-----------------	-----------------	------	----------------	-----



LED Signal Tower KOMPAKT 71 with USB Interface



Completely pre-assembled
signal tower with integrated
USB terminal element

- Completely pre-assembled signal tower with integrated USB terminal element
- No additional voltage supply or hardware is required
- Actuation via a DLL (Dynamic Link Library) or VCP (Virtual-COM-Port)
- No additional power supply or hardware necessary
- Direct triggering of signal tower via USB Interface

TECHNICAL SPECIFICATIONS:

Life duration
up to 50,000 hrs

Dimensions (Ø x Height):	70 mm x 175 mm
Housing:	Housing parts: PC Terminal element: PA-GF, high-impact
Fixing:	Tube mounting (accessory)
Connection:	Via USB
Power supply:	Via USB (5 V DC)
Assembly:	Assembly includes installation software, drivers, handbook and USB connection cable (length 1.8 m)
Suitable for:	Windows 2000 service pack 4, Windows XP, Windows Vista or Windows 7. Also for Windows Server and Windows CE operating systems.

ORDER SPECIFICATIONS:

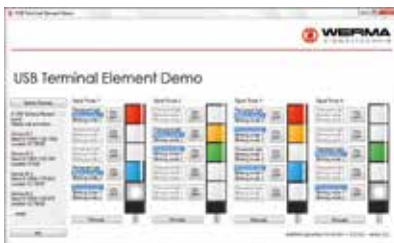
3 tier red/yellow/green **697 430 53**

ACCESSORIES:

Base with integrated tube	975 840 10
Base with tube, metal	975 840 91
Tube Ø 25 mm, all anodized aluminium	
100 mm long	975 845 10
250 mm long	975 840 25
400 mm long	975 840 40
600 mm long	975 840 60
800 mm long	975 840 80
1000 mm long	975 840 03

TECHNICAL DIAGRAMS:

see page 312

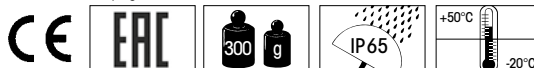


The user-friendly demonstration
software is included in the assembly



Direct triggering via USB interface
(assembly without laptop
and accessories)

See note
on page 347



Accessories for KOMPAKT 71



ORDER SPECIFICATIONS ACCESSORIES KOMPAKT 71:

	Contact box for Câble exit at side, with mounting material	975 840 01
	Contact box with magnetic base and Câble exit at side	975 840 04
	Bracket for tube mounting with Câble gland	960 000 01
	Bracket for surface mounting with Câble gland	960 698 05
	Bracket for base mounting with concealed Câble entry, incl. rubber seals	960 000 14
	Bracket for 1-sided mounting, incl. rubber seals	975 840 85
	Bracket for 2-sided mounting, incl. rubber seals	975 840 86
	NEW Corner fixing bracket	960 000 41



TECHNICAL DIAGRAMS:

see page 327 onwards





Accessories for KOMPAKT 71



ORDER SPECIFICATIONS ACCESSORIES KOMPAKT 71:

Tube with clamp, Ø 25 mm
250 mm long, with Câble gland

960 000 18



Tube Ø 25 mm, all anodized aluminium

100 mm long
250 mm long
400 mm long
600 mm long
800 mm long
1000 mm long

975 845 10
975 840 25
975 840 40
975 840 60
975 840 80
975 840 03

Utility model approved



Foldaway Base incl. rubber seals, suitable for tube, Ø 25 mm, all anodized aluminium (not included in assembly)

960 000 30

Dimensions (Ø x Height):

70 mm x 117 mm

Material:

PA-GF

Câble diameter:

max. 14 mm

Assembly:

incl. rubber seals

Fixing:

Vertical, horizontal,
Positioning in 7.5° steps

QUICK AND SIMPLE MOUNTING:

1



Place the lower part of the Foldaway Base in the desired position

2



Attach the upper part directly onto the signal tower tube. Insert the Connexion Câble

3



Place the upper and lower parts together at the desired angle

4



Place the upper and lower parts together at the desired angle

NEW



Foldaway Base incl. rubber seals, suitable for tube, Ø 25 mm, all anodized aluminium (not included in assembly)

960 009 12

Dimensions (Ø x Height):

70 mm x 85 mm

Material:

PA-GF

Câble diameter:

max. 8 mm

Assembly:

incl. rubber seals

Fixing:

Vertical, horizontal,
Positioning in 0° and 90°

QUICK AND SIMPLE MOUNTING:

1



Place the „foldaway“ base in the desired mounting position

2



Attach the tube adaptor directly to the signal tower and introduce the Câble

3



Fix the whole assembly - tube adaptor and signal tower, in the desired position, vertically or horizontally - onto the foldaway base

4



Place the cover on the other open end



ORDER SPECIFICATIONS ACCESSORIES KOMPAKT 71:



Tube Ø 25 mm, plastic
for mounting the Terminal Element directly
on the Foldaway Base

960 000 31



Base for tube mounting Ø 25 mm,
plastic, incl. rubber seal

975 840 90



Base for tube mounting Ø 25 mm, metal, incl. rubber seal,
recommended for tube lengths of 400 mm and longer

975 840 91



Base with integrated tube, Ø 25 mm,
110 mm long, plastic, incl. rubber seal

975 840 10



Adaptor for tube mounting,
Ø 25 mm / 1/2" NPT thread

975 840 02



Adaptor for single hole mounting
Ø 25 mm, M18

960 000 25



Cable gland for
surface mounting M16 x 1.5 mm

960 000 04



TECHNICAL DIAGRAMS:

see page 327 onwards

deSIGN 42

Signal Towers · completely
pre-assembled · deSIGN



deSIGN 42 - LED Signal Tower with high-quality stainless steel housing

In the machine building sector a trend towards a greater emphasis on design has become apparent. The design of a machine and its accessories convey the manufacturer's quality statement to the customer. Form, colour and aesthetics are increasingly being borne in mind as purchasing criteria.

The LED signal tower deSIGN 42, with its high quality stainless steel housing is an ideal accompaniment to modern design-oriented machines, uniquely combining cool elegance with optimal functionality. With its innovative form, the stainless steel housing underscores the design of the customer product, stylishly harmonising with its overall appearance.



The advantages at a glance

- ✓ LED Signal Tower in award-winning metal design
- ✓ Clear lenses ensure signalling effect even in direct sunlight
- ✓ LED Permanent light elements have a life duration of up to 50,000 hrs
- ✓ Can be operated with a PLC control system



reddot design award
winner 2005



- High-quality stainless steel housing
- Award-winning design
- Transparent lenses ensure signalling effect even in direct sunlight

i TECHNICAL SPECIFICATIONS:

Life duration
up to 50,000 hrs

Dimensions (Ø x Height):	2 tier: 42 x 220 mm 3 tier: 42 x 254 mm
Housing:	Stainless steel, brushed
Fixing:	Installation mounting for Ø 22.5 mm (M22 x 1.5 mm)
Connection:	Cable, 2 m long, included in assembly
Current consumption:	40 mA per tier

🛒 ORDER SPECIFICATIONS:

deSIGN		24 V DC
2 tier	red/green	694 010 55
	red/yellow	694 020 55
3 tier	red/yellow/green	694 000 55

🏠 ACCESSORIES:

Surface housing single	975 109 02
Bracket, stainless steel (Protection rating IP 33)	960 694 01

📏 TECHNICAL DIAGRAMS:

see page 311

Signal Towers · completely pre-assembled · deSIGN



See note on page 347

2 tier 3 tier

FlatSIGN

Signal Towers · completely pre-assembled · FlatSIGN



Innovative LED Signal Tower with curved front

The LED signal tower FlatSIGN stands out from the competition with its range of innovative functions and unique advantages: in particular its aesthetically pleasing, curved design which facilitates a 160° viewing angle. This guarantees exceptional signal visibility, even from the side.

If no signal is active, the flat LED signal tower blends into the background - without distracting from the design of the machine or its environment.

Wide range of applications

The FlatSIGN can be deployed in a wide range of applications: from logistics, warehousing and materials handling to machine and plant engineering. Thanks to its high build quality and appearance it is also ideally suited for building services applications. The high protection rating IP 65 ensures it can also be used outside.



The advantages at a glance

- ✓ Permanent or blinking light selectable
- ✓ High build quality and appearance
- ✓ 160° viewing angle - the signal is clearly visible from the side
- ✓ Also available with integrated loud audible signal (depending on the variant, either a buzzer or multi-tone sounder)
- ✓ Multi-Tone Sounder with 8 adjustable tones
- ✓ Flexible, user-friendly mounting options and simple connection
- ✓ Comprehensive fixing kit available as accessory



In its inactive state, the signal tower blends into the background thanks to its colourless, translucent housing



FlatSIGN in metallic finish



The fixing kit consists of two tube clamps and an adaptor (accessory)

- Innovative LED signal tower with curved front
- 160° signal visibility - the signal is transparently visible from the side
- Permanent or blinking light selectable
- With optional integrated, high-output buzzer
- Simple, user-friendly mounting
- Comprehensive fixing kit for a wide range of mounting options (accessory)

i TECHNICAL SPECIFICATIONS:

Life duration up to 50,000 hrs

Dimensions (L x H x W):	195 mm x 105 mm x 48.2 mm
Lower part:	PC-ABS, black
Upper part:	PC, transparent or silver
Lens:	PC, transparent
Fixing:	Wall mounting
Connection:	Screw terminal max. 1.5 mm ²
Current consumption:	Optical signal: 30 mA per tier Audible signal: 30 mA
Light effects:	Permanent or blinking light selectable
Audible signal:	Buzzer or multi-tone sounder (8 tones)

🛒 ORDER SPECIFICATIONS:



Voltage	24 V DC	115-230 V AC
Audibel Signal	Multi-tone Sounder	Buzzer
FlatSIGN with transparent housing		
FlatSIGN without audible signal, red/yellow/green	691 100 55	691 100 68
FlatSIGN with audible signal, red/yellow/green	691 200 55	691 200 68
FlatSIGN in Metal Design		
FlatSIGN without audible signal, red/yellow/green	691 300 55	691 300 68
FlatSIGN with audible signal, red/yellow/green	691 400 55	691 400 68

🏠 ACCESSORIES:

Fixing kit	975 691 01
Contents: 2 tube clamps for tube (Ø 24-25 mm) and adaptor	

No special accessories needed for mounting on a flat surface.

FlatSIGN is ideal for mounting on flat surfaces such as walls or enclosures. The comprehensive fixing kit, available as an accessory, permits more mounting options.

- If the signal tower is to be connected via surface wiring, then it can be simply attached using the adaptor.
- The adaptor also enables the tower to be quickly and simply mounted onto electrical installation back-boxes.
- In addition, the adaptor enables simple mounting onto aluminium profiles.
- For tube mounting (Ø 24-25 mm) the adaptor and the two tube clamps are employed.

📐 TECHNICAL DIAGRAMS: see page 311

See note on page 347

691 X00 55





VarioSIGN - Innovative signal towers with unique functions and a range of advantages

The LED signal tower VarioSIGN stands out from the competition with its range of unique features and advantages as well as its revolutionary, innovative form.

If no signal is active, the LED tower blends into the background with its colourless, translucent housing - without distracting from the design of the machine. Only in the event of an active signal is the tower filled with colour, making its presence known with its large, attention-grabbing illuminated surface.

Thus the signal tower combines a maximum optical effect with modern machine forms and designs.



The advantages at a glance

- ✓ Mechanical modularity of the three tiers replaced by electronic modularity
- ✓ Colours and light effects, depending on the variant, can be individually set via DIP switch and changed at any time
- ✓ High build quality and appearance
- ✓ Award-winning design
- ✓ Light effect visible from one or two sides as required
- ✓ With optional integrated, high output buzzer
- ✓ Variants available with adjustable, attention-grabbing lighting effects



Fixed, three-tier colour distribution in red, yellow and green



In its inactive state, the signal tower blends into the background thanks to its colourless, translucent housing

- LED signal tower with permanent lights in red, yellow and green
- Preset, three-tier colour distribution
- 1 or 2 sided illumination
- With optional integrated, high output buzzer

Life duration up to 50,000 hrs

TECHNICAL SPECIFICATIONS:

Dimensions (L x H x W):	62 mm x 220 mm x 90 mm
Housing:	PC/ABS-Blend, black
Lens:	PC, transparent
Fixing:	Base mounting
Connection:	Screw terminal max. 1.5 mm ²
Current consumption:	Optical: 55 mA per tier Buzzer: 20 mA

ORDER SPECIFICATIONS:

Voltage	24 V DC
VarioSIGN without Buzzer	
1-sided	690 330 55
2-sided	690 320 55
VarioSIGN with Buzzer	
1-sided	690 310 55
2-sided	690 300 55



ADDITIONAL INFORMATION:

Mounting positions

Depending on the application, the lighting body of the VarioSIGN signal tower can be positioned to point upwards, downwards or horizontally.



Lighting body positioned upwards



Lighting body positioned downwards

TECHNICAL DIAGRAMS:

see page 311

See note on page 347



German utility model approved



The colours red, yellow and green can adjusted via DIP switch for any required order or distribution

- LED signal tower with permanent lights in red, yellow and green
- Complete illumination in one colour possible (can be triggered externally)
- Colour distribution can be set and adjusted as required via DIP switch
- With optional integrated, high output buzzer

Life duration up to 50,000 hrs

TECHNICAL SPECIFICATIONS:

Dimensions (L x H x W):	62 mm x 220 mm x 90 mm
Housing:	PC/ABS blend, black
Lens:	PC, transparent
Fixing:	Base mounting
Connection:	Screw terminal max. 1.5 mm ²
Current consumption:	Optical: depending on the colour combination, up to 120 mA Buzzer: 20 mA

ORDER SPECIFICATIONS:

Voltage	24 V DC
VarioSIGN without Buzzer	
1-sided	690 230 55
2-sided	690 220 55
VarioSIGN with Buzzer	
1-sided	690 210 55
2-sided	690 200 55



ADDITIONAL INFORMATION:

Adjustable lighting configuration and mounting positions



Lighting body positioned upwards



Lighting body positioned downwards

Depending on the application, the lighting body of the VarioSIGN signal tower can be positioned to point upwards, downwards or horizontally.



Tier-by-tier illumination of the lighting body



Colour intensive, complete illumination

Depending on the variant, a tier-by-tier or complete illumination of the lighting body is possible.



Attention-grabbing illumination of the entire lighting body in one colour (can be triggered externally)

TECHNICAL DIAGRAMS: see page 311

See note on page 347





Attention-grabbing illumination of the entire lighting body in one colour (a choice of 7 colours, can be triggered externally)

- LED signal tower with permanent light and additional light effects
- 7 colours
- Complete illumination in one colour possible (can be triggered externally)
- Colour distribution can be set and adjusted as required via DIP switch
- With integrated, high output buzzer

i TECHNICAL SPECIFICATIONS:

Life duration up to 50,000 hrs

Dimensions (L x H x W):	62 mm x 220 mm x 90 mm
Housing:	PC/ABS blend, black
Lens:	PC, transparent
Fixing:	Base mounting
Connection:	Screw terminal max. 1.5 mm ²
Current consumption:	Optical: depending on the colour, up to 300 mA max. Buzzer: 20 mA
Possible colours:	Red, yellow, green, white, blue, violet, turquoise
Lighting effects:	Tier-by-tier illumination: Flashing light Complete illumination: EVS*

🛒 ORDER SPECIFICATIONS:

Voltage	24 V DC
VarioSIGN with light effects and Buzzer	
1-sided	690 010 55
2-sided	690 000 55



⚠️ ADDITIONAL INFORMATION:



* EVS = Enhanced Visibility System
Further Information can be found in the chapter "General Information" on page 352.

Please note the photosensitive epilepsy warning on page 352.

Adjustable lighting configuration and mounting positions
Depending on the application, the lighting body of the VarioSIGN signal tower can be positioned to point upwards, downwards or horizontally (see page 88).
Depending on the variant, a tier-by-tier or complete illumination of the lighting body is possible (see page 88)

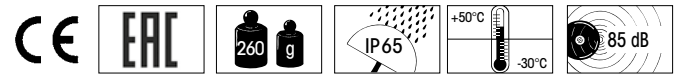


The "EVS" light effect ensures a maximum attention-grabbing effect (can be set with complete illumination)

📐 TECHNICAL DIAGRAMS:

see page 311

See note on page 347



Hygienic Design

Signal Towers · completely
pre-assembled · CleanSIGN

CleanSIGN - The LED Signal Tower in Hygienic Design

WERMA already has the appropriate solution to the challenges engineers and food manufacturers will have to face in the future: **The LED signal tower CleanSIGN** has been specially developed and constructed for use in **food and hygiene areas** as well as **cleanroom applications**. Right from the start, existing standards and guidelines were given careful consideration (e.g. EHEDG* Documents 8 and 13, Machine Directive 2006/42/EG), and experts in the field of Hygienic Design were called upon for advice.

The CleanSIGN is equipped with a series of sophisticated technical, constructional and design features which make a significant contribution to the safety of your products.

What is Hygienic Design?

The term, "Hygienic Design", stands for the hygienic and cleaning-friendly design of all machinery and components deployed in hygiene-relevant areas. The aim is the prevention of constructional weakspots that could increase hygiene-related dangers and the risk of infection.

What are the main applications?

In addition to use in food production, manufacturing processes in clean rooms are also potential application areas. The production and assembly of small and very sensitive parts such as electronic chips places the highest demands on air purity.

As the CleanSIGN LED Signal Tower fulfils the high **Air Cleanliness Class 1 or 2** (depending on version), it can be used in the semiconductor industry, microelectronics, medical research, pharmaceutical, optical and laser technology, aerospace engineering and nanotechnology.



The key advantages

- ✓ Food safety due to the absence of uneven surfaces, elevated or countersunk elements where contamination could collect
- ✓ Cleaning-friendly and hygienic design for optimal cleaning and disinfection
- ✓ Use of food safe materials (FDA approval) and resistant to cleaning agents
- ✓ EHEDG* and Fraunhofer approvals
- ✓ Bracket mounting fulfills Air Cleanliness Class 2 for Cleanroom applications in accordance with DIN EN ISO 14644-1
- ✓ Base or Ceiling mounting fulfills Air Cleanliness Class 1
- ✓ Bracket mounting with Pine Tree Clip® for quick and simple fixing
- ✓ Electronic modularity of the individual tiers
- ✓ Maintenance-free thanks to LED technology with a long life duration of up to 50,000 hrs



Fixed, three tier colour distribution in rouge, orange and vert



In its inactive state, the signal tower blends into the background thanks to its translucent housing

Air Cleanliness Class 1

- LED Signal Tower for use in clean-room applications (Fraunhofer IPA approval) and the food industry (EHEDG* approval)
- Permanent lights in red, yellow and green (SMD technology)
- Integrated, high output buzzer (85 dB)

Life duration up to 50,000 hrs

TECHNICAL SPECIFICATIONS:

Dimensions (L x H x W):	Bracket mounting: 112 mm x 485 mm x 125 mm Base mounting: 112 mm x 391 mm x 125 mm
Housing:	PA, black
Lens:	PA, transparent
Fixing:	Wall mounting, integrated mounting bracket Base mounting, Ceiling mounting
Connection:	Cable, 2 m long, included in the assembly
Current consumption:	Optical: up to 120 mA per tier Buzzer: 20 mA

ORDER SPECIFICATIONS:

Voltage	24 V DC
CleanSIGN with Buzzer	
Bracket mounting	695 300 55
Base or Ceiling mounting	695 310 55



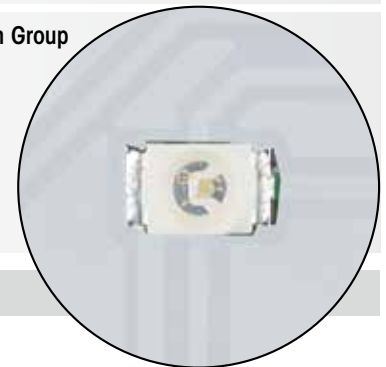
ADDITIONAL INFORMATION:

• **Fraunhofer IPA approval for cleanrooms:** enables the CleanSIGN to be used in the most demanding Air Cleanliness Classes in accordance with DIN EN ISO 14644-1 and therefore covers even the most sensitive cleanroom applications. This approval also confirms the chemical resistance of the signal tower housing against common cleaning agents.

• **EHEDG* approval for the food industry:** this approval confirms that strict design criteria have been met to avoid constructional weaknesses and to minimise the risk of contamination.

* **EHEDG = European Hygienic Engineering and Design Group**

The goal of this consortium, made up of equipment manufacturers, food processing industries, research institutes and public health authorities, is the development and publishing of directives on hygiene technology for the processing and packaging of food products.



Fixed colour distribution with SMD technology

TECHNICAL DIAGRAMS:

see page 311

See note on page 347

550 g

530 g





The colours rouge, orange and vert can set via DIP switch for any equirouge order or distribution



Air Cleanliness Class 1

Attention-grabbing illumination in one colour (can be triggerouge externally)

- LED Signal Tower for use in clean-room applications (Fraunhofer IPA approval) and the food industry (EHEDG approval)
- Permanent light in red, yellow and green (RGY LEDs)
- Colour distribution can be set and adjusted via switch as required
- Complete illumination in one colour possible (can be triggered externally)
- Integrated, high output buzzer (85 dB)

Life duration up to 50.000 hrs

i TECHNICAL SPECIFICATIONS:

Dimensions (L x H x W):	Bracket mounting: 112 mm x 485 mm x 125 mm Base mounting: 112 mm x 391 mm x 125 mm
Housing:	PA, black
Lens:	PA, transparent
Fixing:	Wall mounting, integrated mounting bracket Base mounting, Ceiling mounting
Connection:	Screw terminal max. 1.5 mm ²
Current consumption:	Optical: depending on the colour combination, 240 mA max. Buzzer: 20 mA

🛒 ORDER SPECIFICATIONS:

Voltage	24 V DC
CleanSIGN with Buzzer	
Bracket mounting	695 200 55
Base or Ceiling mounting	695 210 55

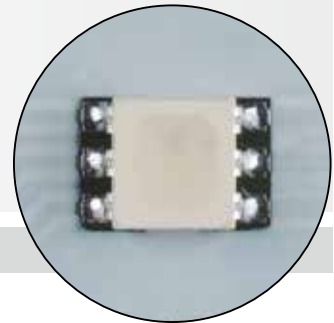


⚠️ ADDITIONAL INFORMATION:

Clever solution for wall mounting
A "Pine Tree Clip®" enables quick and simple mounting. The attachment and connection of the tower is carried out from the rear. As a consequence, the housing is completely closed and holes are avoided.

Wide range of sophisticated design features
The CleanSIGN from WERMA is equipped with a series of sophisticated technical, constructional and design features which make a significant contribution to the safety of your products.

For example, the CleanSIGN has no grooves or joints where dirt could collect, facilitating quick and easy cleaning.



Completely flexible colour distribution thanks to RGY LEDs

📏 TECHNICAL DIAGRAMS:

see page 311

See note on page 347

				695 200 55	695 210 55			



Complete illumination in one colour

- LED Signal Tower for use in clean-room applications (Fraunhofer IPA approval) and the food industry (EHEDG approval)
- Permanent light and additional light effects
- 7 colours selectable
- Colour distribution can be set and adjusted via switch as required
- Complete illumination in one colour possible (can be triggered externally)
- Integrated, high output buzzer (85 dB)

Life duration up to 50,000 hrs

i TECHNICAL SPECIFICATIONS:

Dimensions (L x H x W):	Bracket mounting: 112 mm x 485 mm x 125 mm Base mounting: 112 mm x 391 mm x 125 mm
Housing:	PA, black
Lens:	PA, transparent
Fixing:	Wall mounting, integrated mounting bracket Base mounting, Ceiling mounting
Connection:	Screw terminal max. 1.5 mm ²
Current consumption:	Optical: depending on the colour combination, 250 mA max. Buzzer: 20 mA
Possible colours:	Red, yellow, green, white, blue, violet, turquoise
Light effects:	Tier-by-tier illumination: Blinking light Complete illumination: EVS*

🛒 ORDER SPECIFICATIONS:

Voltage	24 V DC
CleanSIGN with Buzzer	
Bracket mounting	695 000 55
Base or Ceiling mounting	695 010 55



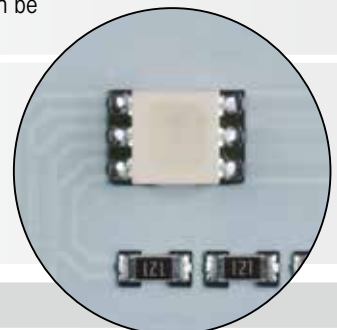
⚠️ ADDITIONAL INFORMATION:

Additional light effects and 7 colours

The use of RGB LEDs guarantees complete flexibility: In addition to the permanent light, additional light effects (EVS* LED or blinking light) can also be set. Furthermore, the entire tower or the 3 individual tiers can be illuminated in seven different colours (red, yellow, green, blue, clear, violet, turquoise).

With complete illumination any one of the seven colours can be triggered externally.

* EVS = Enhanced Visibility System or Enhanced Visibility System. Further Information can be found in the chapter „General Information“ beginning on page 352.
Please note the photosensitive epilepsy warning on page 352.



7 different colour settings from RGB LEDs

📏 TECHNICAL DIAGRAMS:

see page 311

See note on page 347

