

## Variable Pneumatic Control

### LARGE LOW PROFILE OMNI-DIRECTIONAL DESIGN

#### Materials of Construction:

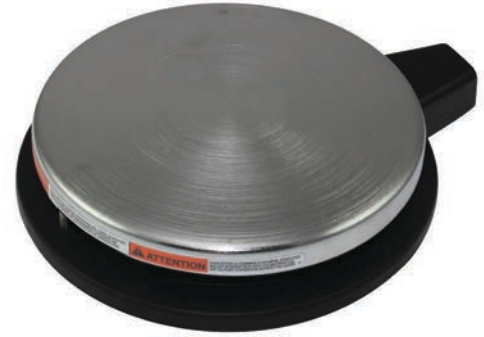
- Internal Valve is constructed of a Non-Ferrous body, Stainless steel plunger and Teflon coated buna-N O-rings
- Air flows when plunger is depressed, stops flowing when plunger is released and exhausts back pressure on output side
- Air exhausts around plunger
- Plunger can be depressed flush with valve body without damage to valve
- Standard 1/8-27 N.P.T. input and output ports
- Filtered and lubricated air supply is required for best operation
- Line pressure up to 150 P.S.I.
- Round nickel chrome cover

#### Features & Benefits:

- Designed for long life operation
- Two-Way models do not exhaust back pressure
- Stain resistant black nitrile Non-skid Base Pad
- Operates from any direction
- Extended tubing flex protection
- Cable shroud provides additional flex protection for tubing

#### Options:

- Special paint finish available



**WARNING** COMPRESSED AIR IS POWERFUL – ALWAYS USE CARE. MAXIMUM LINE PRESSURE UP TO 150 P.S.I.

Size (DIA x H):	5.70 x 1.50 In.
Weight:	1.81 lbs.

For Dimension Drawings visit [www.linemaster.com](http://www.linemaster.com) and click on Line Drawings located under the Guides & Literature Tab

<b>WARNING</b> SEE PRODUCT WARNING ON PAGE 103						
SPECIFICATIONS (Special variations are available to the O.E.M. on special order on the models listed below)						
AGENCY APPROVALS	CATALOG NUMBER	DESCRIPTION	AIR FLOW AT 100 P.S.I.	EXHAUST AT 100 P.S.I.	OPERATING FORCE	PORTS 1/8-27 N.P.T.
N/A	2P-30A2-S	2-Way Momentary	30 C.F.M.	25 C.F.M.	8 to 22 Pounds	Inside Housing
N/A	3P-30A2-S	3-Way Momentary	30 C.F.M.	25 C.F.M.	8 to 22 Pounds	Inside Housing

## Maintained/Momentary Pneumatic Control

### LARGE INDUSTRIAL DESIGN

#### Materials of Construction:

- Internal Valve is constructed of a Non-Ferrous body, Stainless steel plunger and Teflon coated buna-N O-rings
- Air flows when plunger is depressed, stops flowing when plunger is released and exhausts back pressure on output side
- Air exhausts around plunger
- Plunger can be depressed flush with valve body without damage to valve
- Standard 1/8-27 N.P.T. input and output ports
- Filtered and lubricated air supply is required for best operation
- Line pressure up to 150 P.S.I.
- Robust cast iron housing

#### Features & Benefits:

- Designed for long life operation
- Full shield or OX shield covering treadle
- 3 Holes provided for rigid mounting to floor or equipment

#### Options:

- Hercules AirVal also available as a 3-way in either single or 2-stage versions on special order
- 2 Stage models available
- Momentary and maintained versions available



4-Way Model

**⚠ WARNING** COMPRESSED AIR IS POWERFUL – ALWAYS USE CARE. MAXIMUM LINE PRESSURE UP TO 150 P.S.I.

Size (HxWxD):	4.37 x 5.87 x 9.00 In.
Weight:	7.51 lbs.

*For Dimension Drawings visit [www.linemaster.com](http://www.linemaster.com) and click on Line Drawings located under the Guides & Literature Tab*

<b>⚠ WARNING SEE PRODUCT WARNING ON PAGE 103</b>						
SPECIFICATIONS (Special variations are available to the O.E.M. on special order on the models listed below)						
AGENCY APPROVALS	CATALOG NUMBER	DESCRIPTION	AIR FLOW AT 100 P.S.I.	EXHAUST AT 100 P.S.I.	OPERATING FORCE	PORTS 1/8-27 N.P.T.
N/A	3H-25H2-S4H	3-Way Momentary, 2 Stage	30 C.F.M.	25 C.F.M.	19 Pounds	Exterior Housing
N/A	3H-25H2-S4HOX	3-Way Momentary, 2 Stage	30 C.F.M.	25 C.F.M.	19 Pounds	Exterior Housing
N/A	3H-25H2-D4H	3-Way Maintained, 2 Stage	30 C.F.M.	25 C.F.M.	19 Pounds	Exterior Housing
N/A	4H-30H2-SHOX	4-Way Momentary	30 C.F.M.	25 C.F.M.	19 Pounds	Exterior Housing
N/A	4H-30H2-DHOX	4-Way Maintained	30 C.F.M.	25 C.F.M.	19 Pounds	Exterior Housing

## Variable/Momentary Pneumatic Control

### MEDIUM DUTY GENERAL PURPOSE DESIGN

#### Materials of Construction:

- Internal Valve is constructed of a Non-Ferrous body, Stainless steel plunger and Teflon coated buna-N O-rings
- Air flows when plunger is depressed, stops flowing when plunger is released and exhausts back pressure on output side
- Air exhausts around plunger
- Operating temperature 0° to 131° F (-18° to +55°C)
- Rugged Cast Iron Housing

#### Features & Benefits:

- Designed for long life operation
- Nonskid Base Pad
- Two-Way models do not exhaust back pressure
- Plunger can be depressed flush with valve body without damage to valve
- Standard 1/8-27 N.P.T. input and output ports
- Filtered and lubricated air supply is required for best operation
- Line pressure up to 150 P.S.I.
- 2 holes provided for rigid mounting to floor or equipment

#### Options:

- 2-way, 3-way and 4-way models available
- Heavy gauge steel guard available (See "Accessories - Guards" on pages 94 & 95 for details)



**WARNING** COMPRESSED AIR IS POWERFUL – ALWAYS USE CARE. MAXIMUM LINE PRESSURE UP TO 150 P.S.I.

2-Way and 3-Way	
Size (HxWxD):	1.78 x 3.45 x 4.56 In.
Weight:	2.50 lbs.
4-Way	
Size (HxWxD):	1.78 x 3.45 x 4.56 In.
Weight:	2.50 lbs.

*For Dimension Drawings visit [www.linemaster.com](http://www.linemaster.com) and click on Line Drawings located under the Guides & Literature Tab*

<b>WARNING</b> SEE PRODUCT WARNING ON PAGE 103						
SPECIFICATIONS (Special variations are available to the O.E.M. on special order on the models listed below)						
AGENCY APPROVALS	CATALOG NUMBER	DESCRIPTION	AIR FLOW AT 100 P.S.I.	EXHAUST AT 100 P.S.I.	OPERATING FORCE	PORTS 1/8-27 N.P.T.
N/A	2C-30A2-S	2-Way Momentary	30 C.F.M.	25 C.F.M.	10 Pounds	Interior Housing
N/A	3C-30A2-S	3-Way Momentary	30 C.F.M.	25 C.F.M.	10 Pounds	Interior Housing
N/A	4C-30F2-S	4-Way Momentary	30 C.F.M.	25 C.F.M.	19 Pounds	Exterior Housing



# Clipper Twin & Wide Treadle - Pneumatic AirVal

## Variable/Momentary Pneumatic Control

### MEDIUM DUTY GENERAL PURPOSE DESIGN

#### Materials of Construction:

- Internal Valve is constructed of a Non-Ferrous body, Stainless steel plunger and Teflon coated buna-N O-rings
- Air flows when plunger is depressed, stops flowing when plunger is released and exhausts back pressure on output side
- Air exhausts around plunger
- Operating temperature 0° to 131° F (-18° to +55° C)
- Rugged Cast Iron Housing

#### Features & Benefits:

- Designed for long life operation
- Nonskid Base Pad
- Plunger can be depressed flush with valve body without damage to valve
- Standard 1/8-27 N.P.T. input and output ports
- Filtered and lubricated air supply is required for best operation
- Line pressure up to 150 P.S.I.

#### Options:

- Variable available on Special Order
- Heavy gauge steel guard available (See "Accessories - Guards" on pages 94 & 95 for details)



**COMPRESSED AIR IS POWERFUL – ALWAYS USE CARE. MAXIMUM LINE PRESSURE UP TO 150 P.S.I.**

Twin	
Size (HxWxD):	1.87 x 8.38 x 4.54 In.
Weight:	5.00 lbs.
Wide Treadle	
Size (HxWxD):	1.87 x 7.00 x 5.50 In.
Weight:	3.75 lbs.
<i>For Dimension Drawings visit <a href="http://www.linemaster.com">www.linemaster.com</a> and click on Line Drawings located under the Guides &amp; Literature Tab</i>	

<b>WARNING</b> SEE PRODUCT WARNING ON PAGE 103						
SPECIFICATIONS (Special variations are available to the O.E.M. on special order on the models listed below)						
AGENCY APPROVALS	CATALOG NUMBER	DESCRIPTION	AIR FLOW AT 100 P.S.I.	EXHAUST AT 100 P.S.I.	OPERATING FORCE	PORTS 1/8-27 N.P.T.
N/A	TWIN 3C-30A2-S	3-Way Momentary Each Pedal	30 C.F.M.	25 C.F.M.	10 Pounds	Interior Housing
N/A	3L-30A2-S	Wide Treadle 3-Way Momentary	30 C.F.M.	25 C.F.M.	8 Pounds	Interior Housing

## Momentary Pneumatic Control

### VERSATILE COMPACT DESIGN

#### Materials of Construction:

- Internal Valve is constructed of a Non-Ferrous body, Stainless steel plunger and Teflon coated buna-N O-rings
- Air flows when plunger is depressed, stops flowing when plunger is released and exhausts back pressure on output side
- Air exhausts around plunger
- Strong Steel Housing

#### Features & Benefits:

- Nonskid Base Pad
- Designed for long life operation
- Two-Way models do not exhaust back pressure
- Plunger can be depressed flush with valve body without damage to valve
- Standard 1/8-27 N.P.T. input and output ports
- Filtered and lubricated air supply is required for best operation
- Line pressure up to 150 P.S.I.

#### Options:

- Twin Version Available
- Heavy gauge steel guard available (See "Accessories - Guards" on pages 94 & 95 for details)



**WARNING** COMPRESSED AIR IS POWERFUL – ALWAYS USE CARE. MAXIMUM LINE PRESSURE UP TO 150 P.S.I.

Single	
Size (HxWxD):	1.28 x 2.50 x 2.88 In.
Weight:	.50 lbs.
Twin	
Size (HxWxD):	1.47 x 5.75 x 2.88 In.
Weight:	1.50 lbs.
<i>For Dimension Drawings visit <a href="http://www.linemaster.com">www.linemaster.com</a> and click on Line Drawings located under the Guides &amp; Literature Tab</i>	

<b>WARNING</b> SEE PRODUCT WARNING ON PAGE 103						
SPECIFICATIONS (Special variations are available to the O.E.M. on special order on the models listed below)						
AGENCY APPROVALS	CATALOG NUMBER	DESCRIPTION	AIR FLOW AT 100 P.S.I.	EXHAUST AT 100 P.S.I.	OPERATING FORCE	PORTS 1/8-27 N.P.T.
N/A	2B-30A2-S	Single 2-Way Momentary	30 C.F.M.	25 C.F.M.	7 Pounds	Exterior Housing
N/A	3B-30A2-S	Single 3-Way Momentary	30 C.F.M.	25 C.F.M.	7 Pounds	Exterior Housing
N/A	TWIN 3B-30A2-S	3-Way Momentary Each Side	30 C.F.M.	25 C.F.M.	7 Pounds	Exterior Housing

## Variable/Momentary Pneumatic Control

### LONG TREADLE THROW DESIGN

#### Materials of Construction:

- Variable Flow design
- Internal Valve is constructed of a Non-Ferrous body, Stainless steel plunger and Teflon coated buna-N O-rings
- Air flows when plunger is depressed, stops flowing when plunger is released and exhausts back pressure on output side
- Air exhausts around plunger
- Versatility and Good Looks
- Cast Aluminum Housing

#### Features & Benefits:

- Nonskid Base Pad
- Designed for long life operation
- Two-Way models do not exhaust back pressure
- Plunger can be depressed flush with valve body without damage to valve
- Standard 1/8-27 N.P.T. input and output ports
- Filtered and lubricated air supply is required for best operation
- Line pressure up to 150 P.S.I.

#### Options:

- 2-way, 3-way & Variable
- Heavy gauge steel guard available (See "Accessories - Guards" on pages 94 & 95 for details)



**⚠ WARNING** COMPRESSED AIR IS POWERFUL – ALWAYS USE CARE. MAXIMUM LINE PRESSURE UP TO 150 P.S.I.

Size (HxWxD):	1.68 x 3.25 x 5.39 In.
Weight:	1.00 lb.
<p><i>For Dimension Drawings visit <a href="http://www.linemaster.com">www.linemaster.com</a> and click on Line Drawings located under the Guides &amp; Literature Tab</i></p>	

<b>⚠ WARNING SEE PRODUCT WARNING ON PAGE 103</b>						
SPECIFICATIONS (Special variations are available to the O.E.M. on special order on the models listed below)						
AGENCY APPROVALS	CATALOG NUMBER	DESCRIPTION	AIR FLOW AT 100 P.S.I.	EXHAUST AT 100 P.S.I.	OPERATING FORCE	PORTS 1/8-27 N.P.T.
N/A	2E-30A2-S	2-Way Momentary	30 C.F.M.	NONE	2 <sup>1</sup> / <sub>2</sub> Pounds	Interior Housing
N/A	3E-30A2-S	3-Way Momentary	30 C.F.M.	25 C.F.M.	2 <sup>1</sup> / <sub>2</sub> Pounds	Interior Housing
N/A	2E-20V2-S	2-Way Variable Momentary	20 C.F.M.	NONE	2 <sup>1</sup> / <sub>2</sub> Pounds	Interior Housing
N/A	3E-20V2-S	3-Way Variable Momentary	20 C.F.M.	6 C.F.M.	2 <sup>1</sup> / <sub>2</sub> Pounds	Interior Housing

**EN 60529 Degree of Protection IPXX Master Actuator  
EN 60529 Degree of Protection IP00 Snap Switch**

**Momentary/Maintained Air Switch • Isolated Electric Snap Switch  
COMPACT VERSATILE DESIGN**

**Materials of Construction:**

- Strong Steel Housing
- Long Life Air bulb actuator mounted in Housing
- Remotely located air operated Electric Snap Switch
- Supplied with a 10 foot 1/8" ID PVC tubing connecting the foot pedal to the remote air switch
- The tubing is connected at the foot switch end using a molded on strain relief grommet providing superior pull out protection



**Features & Benefits:**

- Remote switch equipped with a 9/16" U.N.F. bulkhead mount
- Available in either momentary or maintained SPDT versions
- Provides versatility in applications
- Isolating the electrically live snap switch from the floor
- Offers environmental protection from short or shock
- 2 holes provided for rigid Mounting to floor or equipment

**Options:**

- Momentary or Maintained models available
- Mounting Plate Available
- Black tubing available
- Twin model available on special order
- Heavy gauge steel guard available (See "Accessories - Guards" on pages 94 & 95 for details)

Size (HxWxD):	1.28 x 2.74 x 2.88 In.
Weight:	.91 lbs.
<p><i>For Dimension Drawings visit <a href="http://www.linemaster.com">www.linemaster.com</a> and click on Line Drawings located under the Guides &amp; Literature Tab</i></p>	

<p><b>⚠ WARNING SEE PRODUCT WARNING ON PAGE 103</b></p> <p>SPECIFICATIONS (Special variations are available to the O.E.M. on special order on the models listed below)</p>							
AGENCY APPROVALS	EN 60529 Degree of Protection	CATALOG NUMBER	DESCRIPTION	CIRCUIT	FORM	OPERATING TEMPERATURE RANGE	ELECTRICAL RATINGS
	IPXX	41SH12 <sup>1</sup>	Momentary	SPDT	C	10°F to 120°F <sup>2</sup>	20 A 125-250 VAC 1 H.P. 125 VAC 2 H.P. 250 VAC
		41DH12 <sup>1</sup>	Maintained				

<sup>1</sup> Supplied with 10 ft. 1/8" I.D. reinforced Clear PVC tubing. <sup>2</sup> The operating temperature range will vary with different lengths of tubing. Please consult the factory for details.

**EN 60529 Degree of Protection IPXX Master Actuator  
EN 60529 Degree of Protection IP00 Snap Switch**

**Momentary/Maintained Air Switch • Isolated Electric Snap Switch  
ERGONOMIC VERSATILE DESIGN**

**Materials of Construction:**

- Molded PVC bulb
- Designed with isolated electrical air switch
- Combines a foot operated air bulb and a remotely located electric snap switch
- Brass fittings
- Actuating Bulb supplied with two grommet mounting holes (Standard Only)

**Features & Benefits:**

- Easy to operate by hand or foot
- Up to 30 foot range using PVC tubing
- Isolates operation from electrically live switch
- Offers environmental protection from short or shock
- Designed for long life trouble free operation
- Simple field replacement of components
- Application versatility
- Ease of interfacing

**Options:**

- Air foot switches are also available in the Premier and Dolphin housings, as well as, a hand operated version
- Aluminum Baseplate
- DPDT Model available
- Clear reinforced tubing available



Actuating Bulb	
Size (HxWxD):	1.26 x 4.59 x 2.77 In.
Weight:	.20 lbs.
Actuating Hand Bulb	
Size (HxWxD):	1.20 x 2.12 x 1.75 In.
Weight:	.15 lbs.
Snap Switch	
Size (HxWxD):	1.00 x .78 x .50 In.
Weight:	.15 lbs.

For Dimension Drawings visit [www.linemaster.com](http://www.linemaster.com) and click on Line Drawings located under the Guides & Literature Tab

<b>⚠ WARNING SEE PRODUCT WARNING ON PAGE 103</b>							
SPECIFICATIONS (Special variations are available to the O.E.M. on special order on the models listed below)							
AGENCY APPROVALS	EN 60529 Degree of Protection	CATALOG NUMBER	DESCRIPTION	CIRCUIT	FORM	OPERATING TEMPERATURE RANGE	ELECTRICAL RATINGS
cULus CE	N/A	81SH12 <sup>1</sup>	Standard Momentary	SPDT	C	10°F to 120°F <sup>2</sup>	20 A 125-250 VAC 1 H.P. 125 VAC 2 H.P. 250 VAC
		81DH12 <sup>1</sup>	Standard Maintained				
cULus CE	N/A	PBSH12 <sup>1</sup>	Hand Bulb Momentary	SPDT	C	10°F to 120°F <sup>2</sup>	20 A 125-250 VAC 1 H.P. 125 VAC 2 H.P. 250 VAC

<sup>1</sup> Supplied with 8 ft. 1/8" I.D. Black PVC tubing. <sup>2</sup> The operating temperature range will vary with different lengths of tubing. Please consult the factory for details.

**EN 60529 Degree of Protection IPXX Master Actuator  
EN 60529 Degree of Protection IP00 Snap Switch**

**Momentary/Maintained Air Switch • Isolated Electric Snap Switch  
ERGONOMIC VERSATILE DESIGN**



**Materials of Construction:**

- Molded PVC bulb
- Designed with isolated electrical air switch
- Combines a foot operated air bulb and a remotely located electric snap switch
- Stainless Steel fitting
- Actuating Bulb supplied with Internal Weight Plate

**Features & Benefits:**

- Easy to operate
- Up to 30 foot range using PVC tubing
- Isolates operation from electrically live switch
- Offers environmental protection from short or shock
- Designed for long life trouble free operation
- Simple field replacement of components
- Application versatility
- Ease of interfacing
- Molded in weight plate for greater stability
- Smooth black shiny finish

**Options:**

- DPDT Model available

Actuating Bulb	
Size (DIA x H):	5.00 x 1.36 In.
Weight:	.80 lbs.
Snap Switch	
Size (HxWxD):	1.00 x .78 x .50 In.
Weight:	.15 lbs.
<i>For Dimension Drawings visit <a href="http://www.linemaster.com">www.linemaster.com</a> and click on Line Drawings located under the Guides &amp; Literature Tab</i>	

<b>⚠ WARNING SEE PRODUCT WARNING ON PAGE 103</b>							
SPECIFICATIONS (Special variations are available to the O.E.M. on special order on the models listed below)							
AGENCY APPROVALS	EN 60529 Degree of Protection	CATALOG NUMBER	DESCRIPTION	CIRCUIT	FORM	OPERATING TEMPERATURE RANGE	ELECTRICAL RATINGS
	IPXX	12SH12 <sup>1</sup>	Momentary	SPDT	C	20°F to 120°F <sup>2</sup>	20 A 125-250 VAC 1 H.P. 125 VAC 2 H.P. 250 VAC
	IPXX	12DH12 <sup>1</sup>	Maintained				
<sup>1</sup> Supplied with 10 ft. 1/8" I.D. black PVC tubing. <sup>2</sup> The operating temperature range will vary with different lengths of tubing. Please consult the factory for details.							