

**NEMA Type 1, 2, 4, 6, 6P & 13**  
**UL ENCLOSURE 1, 2, 4, 6, 6P & 13**  
**CSA ENCLOSURE 1, 2, 4, 6, 6P & 13**  
**EN 60529 Degree of Protection IP68**  
**Meets IEC 60601-2-2**

**Drip tight • Dust tight • Watertight • Oil tight**  
**COMPACT & WATERPROOF DESIGN**

**Materials of Construction:**

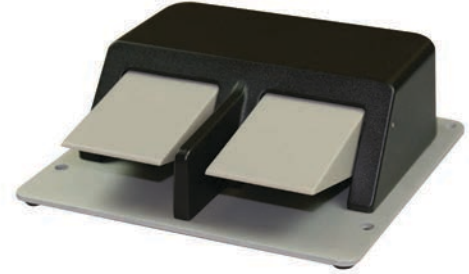
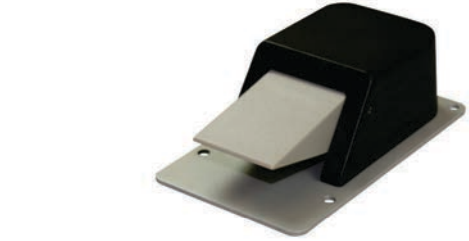
- One Piece Cast Aluminum Housing Single Stage Momentary Contact
- Aluminum baseplate on unguarded models
- Single Pedal 1/2"-14 N.P.T. Threaded Conduit Opening is Standard
- Twin Pedal 3/4"-14 N.P.T. Threaded Conduit Opening is Standard

**Features & Benefits:**

- No dead spot in switch actuation
- Hall Effect sensor for high reliability
- Non-Skid Feet To Minimize Movement
- Divider Bar on Twin Models aids in Reducing Accidental Operation of Multiple Pedals at Once
- 4 holes provided for rigid mounting to floor or equipment

**Options:**

- Up to two pushbutton switches possible
- Mode change switch
- Custom switch colors available
- Custom labeling & silkscreening available
- Protective bag for easy clean-up



Single	
Size (HxWxD):	2.50 x 4.19 x 7.00 In.
Weight:	1.75 lbs.
Twin	
Size (HxWxD):	2.50 x 7.40 x 7.00 In.
Weight:	3.63 lbs.

*For Dimension Drawings visit [www.linemaster.com](http://www.linemaster.com) and click on Line Drawings located under the Guides & Literature Tab*

<b>⚠ WARNING SEE PRODUCT WARNING ON PAGE 103</b>						
SPECIFICATIONS (Special variations are available to the O.E.M. on special order on the models listed below)						
AGENCY APPROVALS	EN 60529 Degree of Protection	CATALOG NUMBER	DESCRIPTION	TYPE	CIRCUIT	ELECTRICAL RATING
	IP68	88LSN1	Momentary	Unguarded	Linear	Input voltage 5-15 VDC (Other voltages available)
	IP68	88LSH1	Momentary	Guarded	Linear	
	IP68	TWIN 88LSN1	Momentary	Unguarded	Each Pedal Linear	
	IP68	TWIN 88LSH1	Momentary	Guarded	Each Pedal Linear	



**NEMA Type 1, 2, 4, 6, 6P & 13**  
**UL ENCLOSURE 1, 2, 4, 6, 6P & 13**  
**CSA ENCLOSURE 1, 2, 4, 6, 6P & 13**  
**EN 60529 Degree of Protection IP68**  
**Meets IEC 60601-2-2**

**Drip tight • Dust tight • Watertight • Oil tight**  
**GUARDED, COMPACT & WATERPROOF DESIGN**

**Materials of Construction:**

- One Piece Cast Aluminum Housing Single Stage Momentary Contact
- Aluminum baseplate on unguarded models
- Single Pedal 1/2"-14 N.P.T. Threaded Conduit Opening is Standard
- Twin Pedal 3/4"-14 N.P.T. Threaded Conduit Opening is Standard

**Features & Benefits:**

- Non-Skid Feet To Minimize Movement
- Divider Bar on Twin Models aids in Reducing Accidental Operation of Multiple Pedals at Once
- 4 holes provided for rigid mounting to floor or equipment
- Heavy Gauge Steel Full Guard painted Alert Orange Covering Entire Foot Switch

**Options:**

- Linear (Hall Effect) mode models available (See page 38 for details)



Single	
Size (HxWxD):	4.50 x 6.00 x 7.00 In.
Weight:	6.00 lbs.
Twin	
Size (HxWxD):	4.50 x 11.00 x 7.00 In.
Weight:	10.00 lbs.

*For Dimension Drawings visit [www.linemaster.com](http://www.linemaster.com) and click on Line Drawings located under the Guides & Literature Tab*

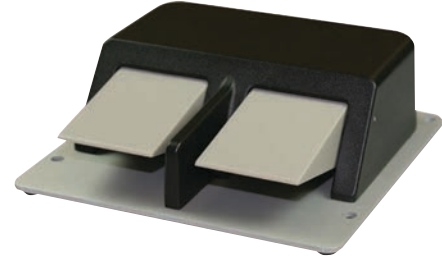
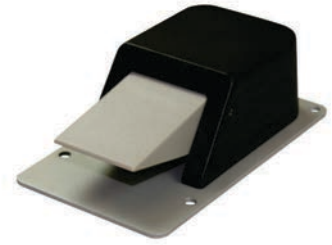
⚠️ <b>WARNING</b> SEE PRODUCT WARNING ON PAGE 103							
SPECIFICATIONS (Special variations are available to the O.E.M. on special order on the models listed below)							
AGENCY APPROVALS	EN 60529 Degree of Protection	CATALOG NUMBER	DESCRIPTION	TYPE	CIRCUIT	FORM	ELECTRICAL RATING
UL, CE, C	IP68	88SH1-05	Momentary	Guarded	SPDT	C	16 A 125-250 VAC 1/2 H.P. 125-250 VAC 250 VAC Maximum
UL, CE, C	IP68	88SH2-05	Momentary	Guarded	DPDT	C	
UL, CE, C	IP68	TWIN 88SH1-05	Momentary	Guarded	Each Pedal SPDT	C	
UL, CE, C	IP68	TWIN 88SH2-05	Momentary	Guarded	Each Pedal DPDT	C	

# Classic IV - No Guard



**NEMA Type 1, 2, 4, 6, 6P & 13**  
**UL ENCLOSURE 1, 2, 4, 6, 6P & 13**  
**CSA ENCLOSURE 1, 2, 4, 6, 6P & 13**  
**EN 60529 Degree of Protection IP68**  
**Meets IEC 60601-2-2**

**Drip tight • Dust tight • Watertight • Oil tight**  
**COMPACT & WATERPROOF DESIGN**



### Materials of Construction:

- One Piece Cast Aluminum Housing Single Stage Momentary Contact
- Aluminum baseplate on unguarded models
- Single Pedal 1/2"-14 N.P.T. Threaded Conduit Opening is Standard
- Twin Pedal 3/4"-14 N.P.T. Threaded Conduit Opening is Standard

### Features & Benefits:

- Non-Skid Feet To Minimize Movement
- Divider Bar on Twin Models aids in Reducing Accidental Operation of Multiple Pedals at Once
- 4 holes provided for rigid mounting to floor or equipment

### Options:

- Linear (Hall Effect) mode models available (See "Classic IV Linear" on page 38 for details)
- Heavy Gauge Steel Full Guard painted Alert Orange  
 Covering Entire Foot Switch Available (See "Classic IV - Guarded" on page 39 for details)

Single	
Size (HxWxD):	2.50 x 4.19 x 7.00 In.
Weight:	1.75 lbs.
Twin	
Size (HxWxD):	2.50 x 7.40 x 7.00 In.
Weight:	3.63 lbs.

*For Dimension Drawings visit [www.linemaster.com](http://www.linemaster.com) and click on Line Drawings located under the Guides & Literature Tab*

<span style="color: red;">▲</span> <b>WARNING</b> SEE PRODUCT WARNING ON PAGE 103							
SPECIFICATIONS (Special variations are available to the O.E.M. on special order on the models listed below)							
AGENCY APPROVALS	EN 60529 Degree of Protection	CATALOG NUMBER	DESCRIPTION	TYPE	CIRCUIT	FORM	ELECTRICAL RATING
UL SP CE	IP68	88SN1-05	Momentary	Unguarded	SPDT	C	16 A 125-250 VAC 1/2 H.P. 125-250 VAC 250 VAC Maximum
UL SP CE	IP68	88SN1B-05 <sup>1</sup>	Momentary	Unguarded	SPDT	C	
UL SP CE	IP68	88SN2-05	Momentary	Unguarded	DPDT	C	
UL SP CE	IP68	TWIN 88SN1-05	Momentary	Unguarded	Each Pedal SPDT	C	
UL SP CE	IP68	TWIN 88SN2-05	Momentary	Unguarded	Each Pedal DPDT	C	

<sup>1</sup>8 ft. 14/3 cord without plug, green lead grounded.

**NEMA Type 1, 2, 4 & 13**  
**UL ENCLOSURE 1, 2, 4 & 13**  
**CSA ENCLOSURE 1, 2, 4 & 13**  
**EN 60529 Degree of Protection IP56**

***Drip tight • Dust tight • Watertight • Oil tight***  
**MEDIUM DUTY COMPACT DESIGN**



**Materials of Construction:**

- Cast aluminum body and treadle with steel base plate and nonskid base pad
- Single 3/4"-14 N.P.T. threaded conduit entry is standard

**Features & Benefits:**

- All models single stage momentary contact
- 2 holes provided for rigid mounting to floor or equipment

**Options:**

- Special threaded conduit entry available to the O.E.M. on special order (Dual / Metric)
- Single/Dual 1/2"-14 NPT threaded conduit entry
- Metric threaded conduit entry



No Shield	
Size (HxWxD):	2.25 In. x 3.50 x 6.20 In.
Weight:	1.50 lbs.
Shielded	
Size (HxWxD):	5.19 In. x 5.90 x 7.27 In.
Weight:	2.75 lbs.
For Dimension Drawings visit <a href="http://www.linemaster.com">www.linemaster.com</a> and click on Line Drawings located under the Guides & Literature Tab	

<b>⚠ WARNING SEE PRODUCT WARNING ON PAGE 103</b>						
SPECIFICATIONS (Special variations are available to the O.E.M. on special order on the models listed below)						
AGENCY APPROVALS	EN 60529 Degree of Protection	CATALOG NUMBER	DESCRIPTION	CIRCUIT	FORM	ELECTRICAL RATINGS
	IP56	78SN1	Momentary	SPDT	C	20 A 125-250 VAC 1 H.P. 125-250 VAC Heavy Pilot Duty 250 VAC Max.
	IP56	78SN2	Momentary	DPDT	C	
	IP56	78SH1	Momentary / Shielded	SPDT	C	
	IP56	78SH2	Momentary / Shielded	DPDT	C	

## EN 60529 Degree of Protection IP20 (IP68 Upon Request)

### COMPACT DESIGN

#### Materials of Construction:

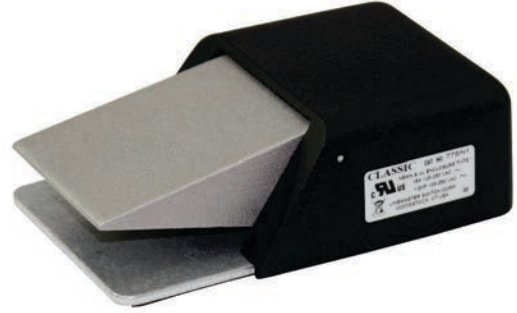
- Cast aluminum body painted black
- Cast aluminum treadle and base plate with nonskid base pad
- Internal strain relief clamp accepts a wide range of cable sizes

#### Features & Benefits:

- Single stage momentary contact
- Clean lines and compact design with a modest cost
- Versatility of this model makes it ideal for O.E.M. devices

#### Options:

- Special threaded conduit entry available to the O.E.M. on special order. (Dual / Metric)
- Custom cordsets and modifications are available to the O.E.M. on special order
- Also available in Solid State (Hall Effect) format on special order. Contact office for specifications
- AirVal models available (See "Classic - Pneumatic AirVal" on page 71 for details)
- Heavy gauge steel guard available (See "Accessories - Guards" on pages 94 & 95 for details)



Size (HxWxD):	1.68 x 3.25 x 5.39 In.
Weight:	1.13 lbs.

For Dimension Drawings visit [www.linemaster.com](http://www.linemaster.com) and click on Line Drawings located under the Guides & Literature Tab

<b>WARNING</b> SEE PRODUCT WARNING ON PAGE 103 SPECIFICATIONS (Special variations are available to the O.E.M. on special order on the models listed below)						
AGENCY APPROVALS	EN 60529 Degree of Protection	CATALOG NUMBER	DESCRIPTION	CIRCUIT	FORM	ELECTRICAL RATINGS
	IP20	77SN1	Momentary	SPDT	C	15 A 125-250 VAC 1/2 H.P. 125-250 VAC

**EN 60529 Degree of Protection IP20 (IP68 Upon Request)**

**LOW POWER COMPACT DESIGN**

**Materials of Construction:**

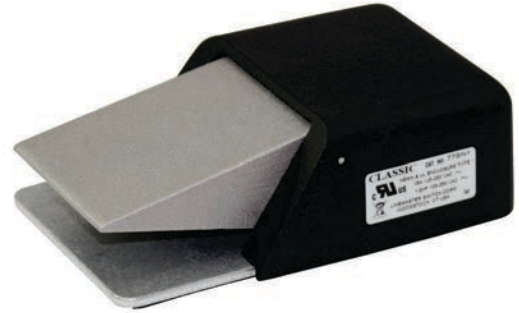
- Cast aluminum body painted black
- Cast aluminum treadle and base plate with nonskid base pad
- Internal strain relief clamp accepts a wide range of cable sizes

**Features & Benefits:**

- Single stage momentary contact
- Versatility of this model makes it ideal for O.E.M. devices
- Clean lines and compact design with a modest cost

**Options:**

- Custom cordsets and modifications are available to the O.E.M. on special order.
- Also available in Solid State (Hall Effect) format on special order. Contact office for specifications
- Heavy gauge steel guard available (See "Accessories - Guards" on pages 94 & 95 for details)



**⚠ WARNING** THE CLASSIC REED IS A LOW POWER DEVICE AND MUST BE USED ONLY IN THOSE APPLICATIONS WHERE SUITABLE DESIGN CONSTRAINTS AND SAFETY PRECAUTIONS ARE MET. CONTACT PROTECTION IS RECOMMENDED IF INDUCTIVE OR HIGH VOLTAGE LOADS ARE SWITCHED. PROPER SNUBBER NETWORKS ARE REQUIRED. HIGH INRUSH CURRENT, DAMAGING TO THE CONTACTS MAY BE PRESENT WHEN SWITCHING TUNGSTEN FILAMENT BULBS OR THROUGH WIRE OF SUFFICIENT LENGTH TO INTRODUCE STORED CAPACITANCE.

Size (HxWxD):	1.68 x 3.25 x 5.39 In.
Weight:	1.13 lbs.

*For Dimension Drawings visit [www.linemaster.com](http://www.linemaster.com) and click on Line Drawings located under the Guides & Literature Tab*

<b>⚠ WARNING SEE PRODUCT WARNING ON PAGE 103</b>						
SPECIFICATIONS (Special variations are available to the O.E.M. on special order on the models listed below)						
AGENCY APPROVALS	EN 60529 Degree of Protection	CATALOG NUMBER	DESCRIPTION	CIRCUIT	FORM	ELECTRICAL RATINGS
	IP20	77SN9P <sup>1</sup>	Momentary	SPST-N.O. Grounded	A	500 MA 120 VAC 100 VDC 10 Watts Max.

<sup>1</sup>6 ft. 18/3 SVT without plug.

**NEMA TYPE 1, 2, 4, 6, 6P & 13**  
**UL Enclosure 1, 2, 4, 6, 6P & 13**  
**EN 60529 Degree of Protection IP68**  
**Meets IEC 60601-2-2**

**Dust tight • Watertight • Oil tight • Corrosion Resistant**  
**MILITARY GRADE DESIGN**



**Materials of Construction:**

- Rugged aluminum casting is painted gray
- Piston type actuator sealed with O-rings
- 1/2"-14 N.P.T. threaded conduit entry.

**Features & Benefits:**

- Electrical contacts are sealed in a "well"
- Corrosion resistant housing & components
- 3 mounting holes provided for rigid mounting to floor or equipment

**Options:**

- Non-skid basepads available
- Custom colors - Special Order

Size (HxWxD):	2.22 x 4.28 x 7.00 In.
Weight:	2.73 lbs.
<i>For Dimension Drawings visit <a href="http://www.linemaster.com">www.linemaster.com</a> and click on Line Drawings located under the Guides &amp; Literature Tab</i>	

<b>⚠ WARNING SEE PRODUCT WARNING ON PAGE 103</b>							
SPECIFICATIONS (Special variations are available to the O.E.M. on special order on the models listed below)							
AGENCY APPROVALS	EN 60529 Degree of Protection	CATALOG NUMBER	DESCRIPTION	NATIONAL STOCK NUMBER	CIRCUIT	FORM	ELECTRICAL RATINGS
	IP68	WP-541-SC	Momentary	5930-00-833-7090	SPDT	C	20 A 125-250 VAC 1 H.P. 125-250 VAC 10 A 28 VDC 1/2 A 125 VDC 1/4 A 250 VDC
	IP68	WP-541-DC	Maintained	5930-00-421-3217	SPDT	C	15 A 125 VAC 10 A 250 VAC

## EN 60529 Degree of Protection IP20 (IP68 Upon Request)

**Splash Resistant • Corrosion Resistant (Available)**  
**MEDIUM DUTY GENERAL PURPOSE DESIGN**

### Materials of Construction:

- Constructed of Cast Iron for long life
- Non-skid base pad
- Adjustable Strain relief connector
- Durable black finish
- Model 632-DA can be used to control lighting
- Model 638-S features a cast aluminum housing painted Alert Orange with a splash resistant interior switch



### Features & Benefits:

- Proven Reliability
- All maintained models offer “Push On-Push Off” action that insures long trouble-free performance
- 2 holes provided for rigid mounting to floor or equipment

### Options:

- The wide treadle models offer a large seven inch target for the operator’s foot (See “Clipper - Twin & Wide Treadle” on page 46 for details)
- Available protective vinyl cover that can be applied over our Clipper. This boot is available only in bright orange, and provides additional protection to the foot switch from limited amounts of liquid, dust, dirt, mud and snow (See “Accessories - Protective Boot” on page 95 for details)
- AirVal models available (See “Clipper - Pneumatic AirVal” on page 68 for details)
- Heavy gauge steel guard available (See “Accessories - Guards” on pages 94 & 95 for details)

Size (HxWxD):	1.78 x 3.45 x 4.56 In.	<i>For Dimension Drawings visit <a href="http://www.linemaster.com">www.linemaster.com</a> and click on Line Drawings located under the Guides &amp; Literature Tab</i>
Weight:	2.25 lbs.	

<b>⚠ WARNING SEE PRODUCT WARNING ON PAGE 103</b>						
SPECIFICATIONS (Special variations are available to the O.E.M. on special order on the models listed below)						
AGENCY APPROVALS	EN 60529 Degree of Protection	CATALOG NUMBER	DESCRIPTION	CIRCUIT	FORM	ELECTRICAL RATINGS
UL, CE, CEE	IP20	632-S	Momentary	SPDT	C	20 A 125-250 VAC 1 H.P. 125-250 VAC
UL, SF	IP20	632-SC3 <sup>1</sup>	Momentary	SPST Wired N.O.	A	15 A 125 VAC 3/4 H.P. 125 VAC
UL, SF, CE	IP20	632-SC36 <sup>4</sup>	Momentary	SPST Wired N.O.	A	10 A 125-250 VAC 1/2 H.P. 125-250 VAC
UL, SF	IP20	632-DC3A <sup>1</sup>	Maintained	SPDT Wired N.O.	C	15 A 125 VAC 3/4 H.P. 125 VAC
UL, CE	IP20	633-S	Momentary	SPDT DB <sup>3</sup>	Z	20 A 125-250 VAC 3/4 H.P. 125 VAC 1 H.P. 250 VAC
cULus, CE	IP20	635-S	Momentary	DPDT	C	15 A 125 VAC 10 A 250 VAC
cULus, CE	IP20	636-S	Two Stage Momentary	Each Stage SPDT	C	1/2 H.P. 125-250 VAC
UL, SF, CE	IP20	632-DA	Maintained	SPDT	C	20 A 125 VAC 10 A 250 VAC 1 1/2 H.P. 120-240 VAC
cULus, CE	IP20	634-DA	Maintained	DPDT	C	10 A 125-250 VAC 1/8 H.P. 125 VAC 1/4 H.P. 250 VAC
cULus, CE	IP21	638-S	Momentary	SPDT	C	10 A 125-250 VAC 1/2 H.P. 125-250 VAC
cULus, CE	IP21	638-SC38 <sup>2</sup>	Momentary	SPDT Wired N.O.	A	

<sup>1</sup>Supplied with 8 ft. 14/3 cord and 3 prong series plug. Green lead grounded. <sup>2</sup>Supplied with 8 ft. 16/3 cord, wired N.O. with green lead grounded. <sup>3</sup>DB Double Break models must be wired to equal voltage sources and the same polarity. The loads should be on the same sides of the line. <sup>4</sup>Supplied with 6 ft. 18/3 cord.

# Clipper - Twin & Wide Treadle



**EN 60529 Degree of Protection IP20 (IP68 Upon Request)**

**Splash Resistant (Available)**

**MEDIUM DUTY GENERAL PURPOSE DESIGN**

**Materials of Construction:**

- Constructed of Cast Iron for long life
- Non-skid base pad
- Adjustable Strain relief connector
- Durable black finish
- Model 642-DA can be used to control lighting

**Features & Benefits:**

- Proven Reliability
- All maintained models offer “Push On-Push Off” action that insures long trouble-free performance
- Wide Treadle Models have 2 holes provided for rigid mounting to floor or equipment
- Twin Models have 4 holes provided for rigid mounting to floor or equipment
- Divider Bar on Twin Models aids in Reducing Accidental Operation of Multiple Pedals at Once

**Options:**

- The wide treadle models offer a large seven inch target for the operator’s foot
- Aluminum housing available for Twin Models
- AirVal models available (See “Clipper Twin & Wide Treadle - Pneumatic AirVal” on page 69 for details)
- Heavy gauge steel guard available (See “Accessories - Guards” on pages 94 & 95 for details)



Twin	
Size (HxWxD):	1.87 x 8.38 x 4.54 In.
Weight:	5.00 lbs.
Wide Treadle	
Size (HxWxD):	1.78 x 7.00 x 5.50 In.
Weight:	3.63 lbs.
<i>For Dimension Drawings visit <a href="http://www.linemaster.com">www.linemaster.com</a> and click on Line Drawings located under the Guides &amp; Literature Tab</i>	

<b>⚠ WARNING SEE PRODUCT WARNING ON PAGE 103</b> SPECIFICATIONS (Special variations are available to the O.E.M. on special order on the models listed below)						
AGENCY APPROVALS	EN 60529 Degree of Protection	CATALOG NUMBER	DESCRIPTION	CIRCUIT	FORM	ELECTRICAL RATINGS
UL, S, CE	IP20	TWIN 632-S	Twin / Momentary	Each Side SPDT	C	20 A 125-250 VAC 1 H.P. 125-250 VAC
e, UL, US, CE	IP20	TWIN 635-S	Twin / Momentary	Each Side DPDT	C	15 A 125 VAC 10 A 250 VAC 1/2 H.P. 125-250 VAC
S, UL, S, CE	IP20	642-S	Wide Treadle / Momentary	SPDT	C	20 A 125-250 VAC 1 H.P. 125-250 VAC
e, UL, US, CE	IP20	643-S	Wide Treadle / Momentary	SPDT DB <sup>1</sup>	Z	20 A 125-250 VAC 3/4 H.P. 125 VAC 1 H.P. 250 VAC
e, UL, US, CE	IP20	645-S	Wide Treadle / Momentary	DPDT	C	15 A 125 VAC 10 A 250 VAC
e, UL, US, CE	IP20	646-S	Wide Treadle / Momentary 2-Stage	Each Stage SPDT	C	1 1/2 H.P. 120-240 VAC
S, UL, S, CE	IP20	642-DA	Wide Treadle / Maintained	SPDT	C	20 A 125 VAC 10 A 250 VAC 1 1/2 H.P. 120-240 VAC

<sup>1</sup>DB Double Break models must be wired to equal voltage sources and the same polarity. The loads should be on the same sides of the line.

**EN 60529 Degree of Protection IP65 (IP68 Upon Request)**

**Splash Resistant • Corrosion Resistant (Available)  
MEDIUM DUTY GENERAL PURPOSE DESIGN**

**Materials of Construction:**

- Constructed of zinc die cast
- Non-skid base pad
- Durable black finish
- Integral adjustable strain relief clamp
- Operating Temperature Range: -20 degrees C to +80 degrees C (-4 degrees F to +176 degrees F)
- 1/2" - 14 NPT Conduit Entry

**Features & Benefits:**

- Proven Reliability
- 2 holes provided (2.875" center - to - center) for rigid mounting to floor or equipment
- Gasket seal provides superior protection from liquids
- Stainless steel exterior hardware
- Steel actuating mechanism
- Passivated stainless steel springs

**Options:**

- Heavy gauge steel guard available on special order
- Cabled variations available



Single	
Size (HxWxD):	2.13 x 3.50 x 5.61 In.
Weight:	2.50 lbs.
Twin	
Size (HxWxD):	2.25 x 8.50 x 5.61
Weight:	4.63 lbs.
For Dimension Drawings visit <a href="http://www.linemaster.com">www.linemaster.com</a> and click on Line Drawings located under the Guides & Literature Tab	

<b>⚠ WARNING SEE PRODUCT WARNING ON PAGE 103</b>						
SPECIFICATIONS (Special variations are available to the O.E.M. on special order on the models listed below)						
AGENCY APPROVALS	EN 60529 Degree of Protection	CATALOG NUMBER	DESCRIPTION	CIRCUIT	FORM	ELECTRICAL RATINGS
	IP65	911-SZ	Momentary	SPDT	C	20 A 125-250 VAC 1 H.P. 125-250 VAC
	IP65	911-SC3Z <sup>1</sup>	Momentary	SPDT	C	15A 125 VAC 1 H.P. 125 VAC
	IP65	TWIN 911-SZ	Momentary	SPDT Each Side	C	20 A 125-250 VAC 1 H.P. 125-250 VAC
<sup>1</sup> Supplied with 8 ft. 14/3 cord and 3 prong series plug. Green lead grounded.						

**EN 60529 Degree of Protection IP20 (IP68 Upon Request)**

**Splash Resistant (Available)**

**LOW PROFILE ERGONOMIC DESIGN**

**Materials of Construction:**

- Constructed of cast aluminum cover and base
- Provided with a reversible strain relief clamp that accommodates a wide range of cable sizes
- Painted black

**Features & Benefits:**

- The low, sleek styling of this model reduces operator fatigue
- Nonskid base pads

**Options:**

- 24" wide version available on special order
- AirVal Models available on special orders



Size (HxWxD):	1.47 x 3.25 x 5.53 In.
Weight:	1.00 lbs.
<p><i>For Dimension Drawings visit <a href="http://www.linemaster.com">www.linemaster.com</a> and click on Line Drawings located under the Guides &amp; Literature Tab</i></p>	

<b>⚠ WARNING SEE PRODUCT WARNING ON PAGE 103</b>						
SPECIFICATIONS (Special variations are available to the O.E.M. on special order on the models listed below)						
AGENCY APPROVALS	EN 60529 Degree of Protection	CATALOG NUMBER	DESCRIPTION	CIRCUIT	FORM	ELECTRICAL RATINGS
	IP20	121-S	Momentary	SPDT	C	20 A 125-250 VAC 1 H.P. 125-250 VAC
	IP20	124-S	Momentary	DPDT	C	15 A 125-250 VAC 1/2 H.P. 125-250 VAC

**EN 60529 Degree of Protection IP20 (IP68 Upon Request)**

**Waterproof (Available)**

**LARGE LOW PROFILE ERGONOMIC DESIGN**

**Materials of Construction:**

- Constructed of Cast Aluminum
- Painted gray

**Features & Benefits:**

- The parabolic curvature of the cover makes the Deluxe easy to operate without fatigue
- Full nonskid base pad

**Options:**

- Twin and triple models available - special order
- Guarding available contact Linemaster for details



Size (HxWxD):	1.71 x 4.91 x 5.44 In.
Weight:	1.00 lbs.

*For Dimension Drawings visit [www.linemaster.com](http://www.linemaster.com) and click on Line Drawings located under the Guides & Literature Tab*

<b>⚠ WARNING SEE PRODUCT WARNING ON PAGE 103</b>						
SPECIFICATIONS (Special variations are available to the O.E.M. on special order on the models listed below)						
AGENCY APPROVALS	EN 60529 Degree of Protection	CATALOG NUMBER	DESCRIPTION	CIRCUIT	FORM	ELECTRICAL RATINGS
	IP20	81-S	Momentary	SPDT	C	10 A 125-250 VAC
	IP20	85-S	Two Stage Momentary	Each Stage SPDT	C	1/2 H.P. 125-250 VAC

## EN 60529 Degree of Protection IP20 (IP68 Upon Request)

### LARGE LOW PROFILE MULTI-FUNCTION DESIGN

#### Materials of Construction:

- Cover is molded from medium gray high impact polymeric material
- Base and treadles are made of a die cast zinc
- The cover tapers close to the floor in the front with a full five inches between the side treadle bars
- A Non-skid base pad provides a secure placement
- This multi-pedal foot switch should be considered when function, good looks and economy are required
- It incorporates a unique building block approach that allows the use of up to four basic SPDT snap switches
- SPECIAL VARIATIONS are available to the O.E.M. Special modifications include custom cordsets, nameplates, two stage operation, non operative cover, special circuits and a special translucent molded vinyl cover for added environmental protection against limited amounts of water and dirt
- Switch cover actuates separate function

#### Features & Benefits:

- Treadles are made of a die cast metal
- The cover tapers close to the floor in the front with a full five inches between the side treadle bars
- A Non-skid base pad provides a secure placement
- Supplied with internal adjustable Strain Relief for cord

#### Options:

- SPECIAL VARIATIONS are available to the O.E.M. Special modifications include custom cordsets, nameplates, two stage operation, non operative cover, special circuits and a special translucent molded vinyl cover for added environmental protection against limited amounts of water and dirt
- Available protective vinyl cover that can be applied over our Deluxe II. This cover is available only in Semi-clear, and provides additional protection to the foot switch from limited amounts of liquid, dust, dirt, mud and snow



Size (HxWxD):	1.67 x 6.87 x 5.64 In.
Weight:	2.00 lbs.

For Dimension Drawings visit [www.linemaster.com](http://www.linemaster.com) and click on Line Drawings located under the Guides & Literature Tab

#### NOTE:

*The translucent vinyl cover is made by a dip molding process. Minor cosmetic imperfections and blemishes are inherent in dip molded parts and must be expected. However, the basic environmental protection afforded is not affected.*

<b>⚠ WARNING SEE PRODUCT WARNING ON PAGE 103</b> SPECIFICATIONS (Special variations are available to the O.E.M. on special order on the models listed below)							
AGENCY APPROVALS	EN 60529 Degree of Protection	CATALOG NUMBER	DESCRIPTION	PEDALS	CIRCUIT	FORM	ELECTRICAL RATINGS
	IP20	68-S3	Dual Treadle / Momentary	2 Pedals plus Cover	SPDT	C	10 A 125-250 VAC 1/2 H.P. 125-250 VAC
	IP20	68-S3N	Dual Treadle / Momentary	2 Pedals <sup>1</sup>	SPDT	C	
	IP20	68-S4N	Dual Treadle / Momentary	2 Pedals <sup>1</sup>	DPDT	C	
	IP20	68-S2	Single Treadle / Momentary	1 Pedal plus Cover	SPDT	C	

<sup>1</sup>Cover non-operative with side treadle bars active.