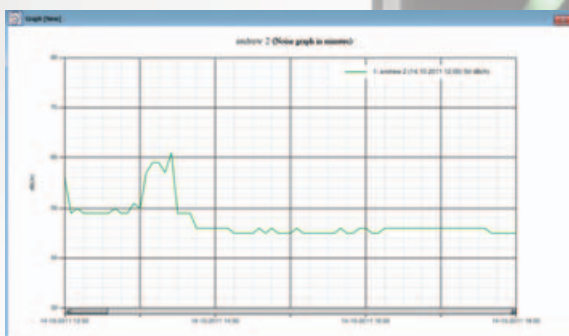


# SoundEar II®

The sound of a good working environment!



SoundLog: A data log that saves measurements for up to four weeks is available for the SoundEar II® system.



# SoundEar II®

The sound of a good working environment!



Many hospital patients complain about too much noise. This includes noise from medical equipment, staff and visitors, closing doors etc.

Research has shown that noise levels above 50 dB(A) delay recovery and rehabilitation periods, thereby causing patients to stay for an unnecessary, longer period of time due to bad acoustic and sound environments within modern hospitals.

Hospitals of the future focus on lower noise levels. Not only does a good auditive environment facilitate recovery, it also leads to better sleep patterns and higher levels of patient and staff well-being.

Let **SoundEar II®** help you save money by reducing patient hospitalisation periods and staff sickness absence.

**SoundEar II®** is mounted onto a wall, showing the noise level in an easy to understand manner, and it omits a warning whenever the noise level gets too high. **SoundEar II®** is a good system to utilise in particularly sensitive hospitals areas:

- neonatal units
- operating rooms
- recovery rooms
- rooms with several beds
- quiet areas
- waiting rooms

**SoundEar II®** has been specifically developed for use in hospitals and is approved in accordance with IEC 60601-1 (medical electrical equipment).

## Technical data:

**Standards:** 60601-1: Medical electrical equipment  
- Part 1: General requirements for basic safety and essential performance.  
60601-1-2: Medical electrical equipment  
- Part 1-2: General requirements for basic safety and essential performance.

### Mechanical features:

Cabinet: Shockproof acrylic  
Measurements: length: 265 mm,  
width: 205 mm, height: 46 mm  
Weight: 1.5 kg

### Electrical features:

Power supply: 24 Volt DC

**Temperature:** During operation: 0 °C to 50 °C  
When stored/during transport:  
-20 °C to 60 °C

### Dampness and dust:

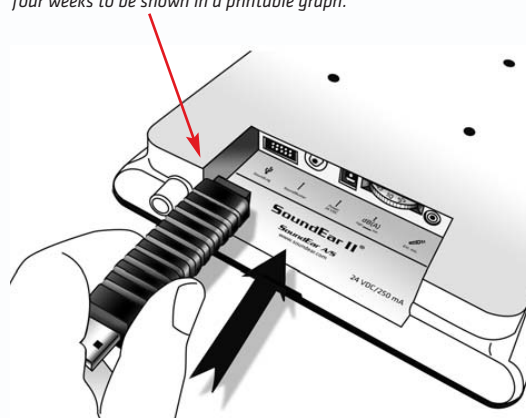
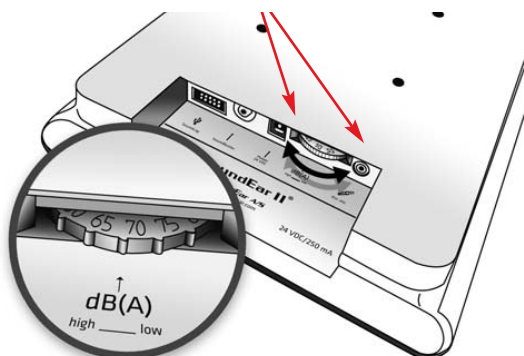
IP 42

### Measurement parameters:

Frequency: 20Hz to 16 kHz  
Scope of measurement: 40 dB to 115 dB  
Frequency weighing: A-filter  
Time weighing: Slow (1 sec)  
Deviation: +/- 3 dB

You can pre-set your **SoundEar II®** to provide a visual warning sign consisting of a flashing red light at 16 different noise limits ranging from 40 to 115 dB(A). Use the red wheel at the bottom of the device to select the desired noise limit. Our website contains information on suitable noise limits.

**SoundEar II®** can be connected to an external microphone.



## SoundLog

A data log that saves measurements for up to four weeks is available for the **SoundEar II®** system. **SoundEar II®** measures sounds and the measurements are saved by the data log. The computer program delivered along with the data log allows the measurements from the last four weeks to be shown in a printable graph.





# SoundEar II<sup>®</sup> Industrial

Find out exactly when to use ear protection



[www.soundear.dk](http://www.soundear.dk)





# SoundEar II® Industrial



## Find out exactly when to use ear protection

In workplaces, where noise levels depend on location and production processes, it is sometimes difficult to decide whether ear protection is needed or not.

SoundEar II® leaves nothing to chance. It omits a clear and easily understandable warning in those areas where the use of ear protection is required.

SoundEar II® Industrial is dust- and waterproof and can be used indoors as well as outdoors.

[More information: [www.soundear.dk](http://www.soundear.dk)]

### Technical data:

**Standards:** 60601-1: Medical electrical equipment  
- Part 1: General requirements for basic safety and essential performance.  
60601-1-2: Medical electrical equipment  
- Part 1-2: General requirements for basic safety and essential performance.

### Mechanical features:

Cabinet: Shockproof acrylic  
Measurements: length: 265 mm,  
width: 205 mm, height: 46 mm  
Weight: 1.5 kg

### Electrical features:

Power supply: 24 Volt DC

**Temperature:** During operation: 0 °C to 50 °C  
When stored/during transport:  
-20 °C to 60 °C

### Dampness and dust:

IP 42

### Measurement parameters:

Frequency: 20Hz to 16 Hz  
Scope of measurement: 40 dB to 115 dB  
Frequency weighing: A-filter  
Time weighing: Slow (1 sec)  
Deviation: +/- 3 dB

You can pre-set your SoundEar II® to provide a visual warning sign consisting of a flashing red light at 16 different noise limits ranging from 40 to 115 dB(A). Use the red wheel at the bottom of the device to select the desired noise limit. Our website contains information on suitable noise limits.

SoundEar II® can be connected to an external microphone.



### SoundLog

A data log that saves measurements for up to four weeks is available for the SoundEar II® system. SoundEar II® measures sounds and the measurements are saved by the data log. The computer program delivered along with the data log allows the measurements from the last four weeks to be shown in a printable graph.



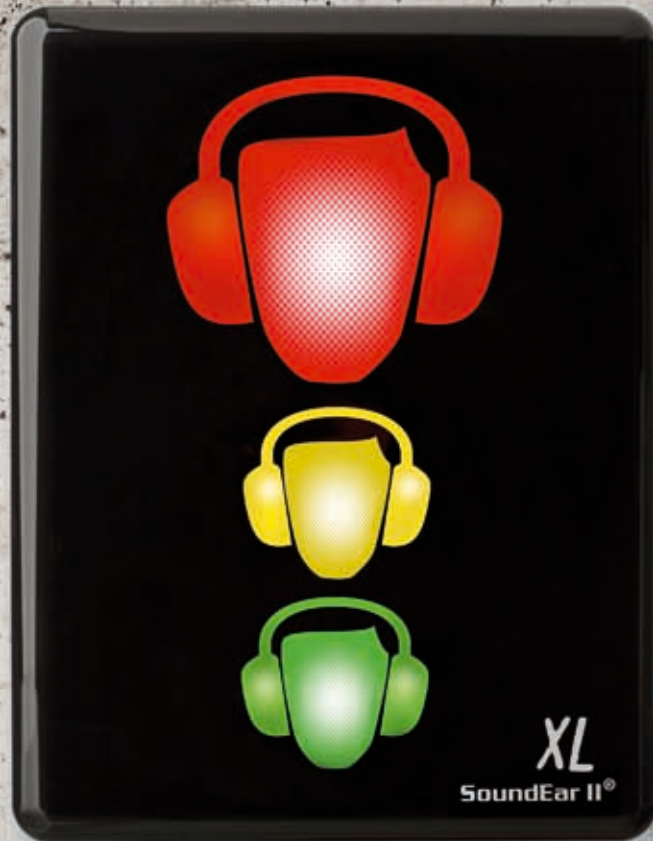
SoundEar A/S  
[www.soundear.dk](http://www.soundear.dk)





# Industry XL

Find out exactly  
when to use ear protection



**4 x SoundEar®II industry = 1 SoundEar Industry XL**



[www.soundear.com](http://www.soundear.com)



# SoundEar II® Industry XL



## Big signs for big locations!

In workplaces, where noise levels depend on location and production processes, it is sometimes difficult to decide whether ear protection is needed or not.

Industry XL® leaves nothing to chance. It omits a clear and easily understandable warning in those areas where the use of ear protection is required.

Industry XL is dust – and waterproof and can be used indoors as well as outdoors.

[More information: [www.soundear.com](http://www.soundear.com)]

### Technical data:

**Standards:** IEC 61672

**Mechanical features:**

Cabinet: Shockproof acrylic  
Measurements: length: 576 mm,  
width: 376 mm, height: 46 mm

**Electrical features:**

Power supply: 24 Volt DC

**Temperature:** During operation: 0 °C to 50 °C

When stored/during transport:  
-20 °C to 60 °C

**Dampness and dust:**

IP 42

**Measurement parameters:**

Frequency: 20Hz to 16 kHz

Scope of measurement: 40 dB to 115 dB

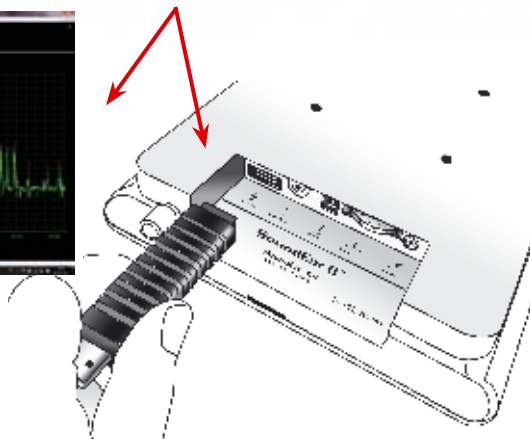
Frequency weighing: A-filter

Time weighing: Slow (1 sec)

Deviation: +/- 3 dB

### SoundLog

A data log that saves measurements for up to four weeks is available for the SoundEar II® system. SoundEar II® measures sounds and the measurements are saved by the data log. The computer program delivered along with the data log allows the measurements from the last four weeks to be shown in a printable graph.



You can pre-set your SoundEar II® to provide a visual warning sign consisting of a flashing red light at 16 different noise limits ranging from 40 to 115 dB(A). Use the red wheel at the bottom of the device to select the desired noise limit. Our website contains information on suitable noise limits.

SoundEar II® can be connected to an external microphone.

