



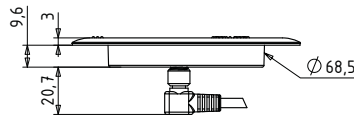
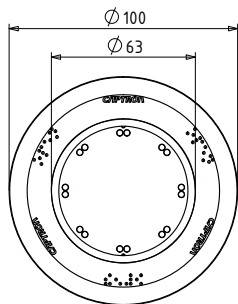
## CHT9 KLEBEMONTAGE, BEDIENUNG EINSEITIG

### CHT9 ADHESIVE MOUNTING, SINGLE SIDED OPERATION

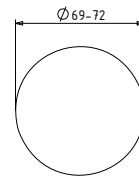
#### CHT9-1 (Wandmontage) CHT9-1 (Wall mounting)



- **Ideal für Montage auf Blech**  
Beispielsweise Karosserie-Bepankung
- **Extrem flacher Aufbau (3 mm)**
- **Ideal for mounting on sheet metal**  
For example for vehicle bodywork
- **Extremely flat shape (3 mm)**



Bohrbild  
Hole pattern



#### Mögliche erhabene Piktogramme Possible tactile pictograms



#### Braillezeichen (variiert je nach Piktogramm) Braille characters (depend on pictogram)



- DY** Dynamisch  
Dynamic
- AM** Semi-Automatic
- PNP** PNP - Transistor  
PNP - transistor
- NPN** NPN - Transistor  
NPN - transistor
- Vibration** Vibration
- Signalton** Signal tone

#### Farbvarianten Available colours

