

NEMA Type 1, 2, 4, 6, 6P & 13
UL ENCLOSURE 1, 2, 4, 6, 6P & 13
CSA ENCLOSURE 1, 2, 4, 6, 6P & 13
EN 60529 Degree of Protection IP68
Meets IEC 60601-2-2

Drip tight • Dust tight • Watertight • Oil tight
COMPACT & WATERPROOF DESIGN

Materials of Construction:

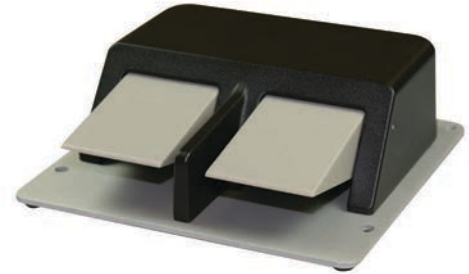
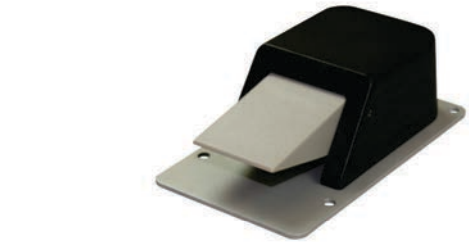
- One Piece Cast Aluminum Housing Single Stage Momentary Contact
- Aluminum baseplate on unguarded models
- Single Pedal 1/2"-14 N.P.T. Threaded Conduit Opening is Standard
- Twin Pedal 3/4"-14 N.P.T. Threaded Conduit Opening is Standard

Features & Benefits:

- No dead spot in switch actuation
- Hall Effect sensor for high reliability
- Non-Skid Feet To Minimize Movement
- Divider Bar on Twin Models aids in Reducing Accidental Operation of Multiple Pedals at Once
- 4 holes provided for rigid mounting to floor or equipment

Options:

- Up to two pushbutton switches possible
- Mode change switch
- Custom switch colors available
- Custom labeling & silkscreening available
- Protective bag for easy clean-up



Single	
Size (HxWxD):	2.50 x 4.19 x 7.00 In.
Weight:	1.75 lbs.
Twin	
Size (HxWxD):	2.50 x 7.40 x 7.00 In.
Weight:	3.63 lbs.

For Dimension Drawings visit www.linemaster.com and click on Line Drawings located under the Guides & Literature Tab

⚠ WARNING SEE PRODUCT WARNING ON PAGE 103						
SPECIFICATIONS (Special variations are available to the O.E.M. on special order on the models listed below)						
AGENCY APPROVALS	EN 60529 Degree of Protection	CATALOG NUMBER	DESCRIPTION	TYPE	CIRCUIT	ELECTRICAL RATING
	IP68	88LSN1	Momentary	Unguarded	Linear	Input voltage 5-15 VDC (Other voltages available)
	IP68	88LSH1	Momentary	Guarded	Linear	
	IP68	TWIN 88LSN1	Momentary	Unguarded	Each Pedal Linear	
	IP68	TWIN 88LSH1	Momentary	Guarded	Each Pedal Linear	