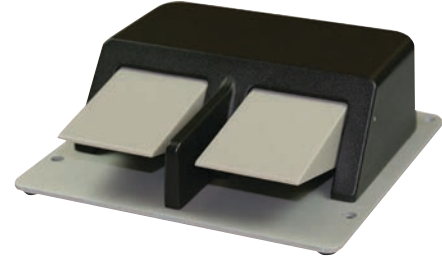
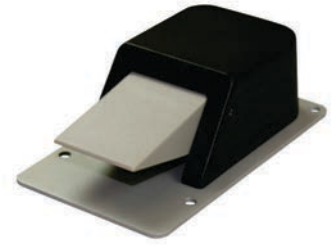


# Classic IV - No Guard



**NEMA Type 1, 2, 4, 6, 6P & 13**  
**UL ENCLOSURE 1, 2, 4, 6, 6P & 13**  
**CSA ENCLOSURE 1, 2, 4, 6, 6P & 13**  
**EN 60529 Degree of Protection IP68**  
**Meets IEC 60601-2-2**

**Drip tight • Dust tight • Watertight • Oil tight**  
**COMPACT & WATERPROOF DESIGN**



### Materials of Construction:

- One Piece Cast Aluminum Housing Single Stage Momentary Contact
- Aluminum baseplate on unguarded models
- Single Pedal 1/2"-14 N.P.T. Threaded Conduit Opening is Standard
- Twin Pedal 3/4"-14 N.P.T. Threaded Conduit Opening is Standard

### Features & Benefits:

- Non-Skid Feet To Minimize Movement
- Divider Bar on Twin Models aids in Reducing Accidental Operation of Multiple Pedals at Once
- 4 holes provided for rigid mounting to floor or equipment

### Options:

- Linear (Hall Effect) mode models available (See "Classic IV Linear" on page 38 for details)
- Heavy Gauge Steel Full Guard painted Alert Orange  
 Covering Entire Foot Switch Available (See "Classic IV - Guarded" on page 39 for details)

Single	
Size (HxWxD):	2.50 x 4.19 x 7.00 In.
Weight:	1.75 lbs.
Twin	
Size (HxWxD):	2.50 x 7.40 x 7.00 In.
Weight:	3.63 lbs.

*For Dimension Drawings visit [www.linemaster.com](http://www.linemaster.com) and click on Line Drawings located under the Guides & Literature Tab*

<span style="color: red;">⚠</span> <b>WARNING</b> SEE PRODUCT WARNING ON PAGE 103							
SPECIFICATIONS (Special variations are available to the O.E.M. on special order on the models listed below)							
AGENCY APPROVALS	EN 60529 Degree of Protection	CATALOG NUMBER	DESCRIPTION	TYPE	CIRCUIT	FORM	ELECTRICAL RATING
UL Ⓢ CE	IP68	88SN1-05	Momentary	Unguarded	SPDT	C	16 A 125-250 VAC 1/2 H.P. 125-250 VAC 250 VAC Maximum
UL Ⓢ CE	IP68	88SN1B-05 <sup>1</sup>	Momentary	Unguarded	SPDT	C	
UL Ⓢ CE	IP68	88SN2-05	Momentary	Unguarded	DPDT	C	
UL Ⓢ CE	IP68	TWIN 88SN1-05	Momentary	Unguarded	Each Pedal SPDT	C	
UL Ⓢ CE	IP68	TWIN 88SN2-05	Momentary	Unguarded	Each Pedal DPDT	C	

<sup>1</sup>8 ft. 14/3 cord without plug, green lead grounded.