

Variable Pneumatic Control

LARGE LOW PROFILE OMNI-DIRECTIONAL DESIGN

Materials of Construction:

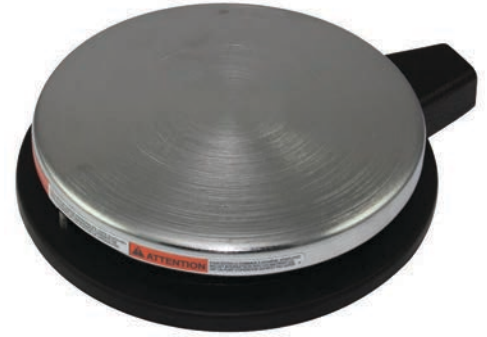
- Internal Valve is constructed of a Non-Ferrous body, Stainless steel plunger and Teflon coated buna-N O-rings
- Air flows when plunger is depressed, stops flowing when plunger is released and exhausts back pressure on output side
- Air exhausts around plunger
- Plunger can be depressed flush with valve body without damage to valve
- Standard 1/8-27 N.P.T. input and output ports
- Filtered and lubricated air supply is required for best operation
- Line pressure up to 150 P.S.I.
- Round nickel chrome cover

Features & Benefits:

- Designed for long life operation
- Two-Way models do not exhaust back pressure
- Stain resistant black nitrile Non-skid Base Pad
- Operates from any direction
- Extended tubing flex protection
- Cable shroud provides additional flex protection for tubing

Options:

- Special paint finish available



WARNING COMPRESSED AIR IS POWERFUL – ALWAYS USE CARE. MAXIMUM LINE PRESSURE UP TO 150 P.S.I.

Size (DIA x H):	5.70 x 1.50 In.
Weight:	1.81 lbs.

For Dimension Drawings visit www.linemaster.com and click on Line Drawings located under the Guides & Literature Tab

WARNING SEE PRODUCT WARNING ON PAGE 103						
SPECIFICATIONS (Special variations are available to the O.E.M. on special order on the models listed below)						
AGENCY APPROVALS	CATALOG NUMBER	DESCRIPTION	AIR FLOW AT 100 P.S.I.	EXHAUST AT 100 P.S.I.	OPERATING FORCE	PORTS 1/8-27 N.P.T.
N/A	2P-30A2-S	2-Way Momentary	30 C.F.M.	25 C.F.M.	8 to 22 Pounds	Inside Housing
N/A	3P-30A2-S	3-Way Momentary	30 C.F.M.	25 C.F.M.	8 to 22 Pounds	Inside Housing