

EN 60529 Degree of Protection IP20 (IP68 Upon Request)

Splash Resistant (Available)

LARGE LOW PROFILE OMNI-DIRECTIONAL DESIGN

Materials of Construction:

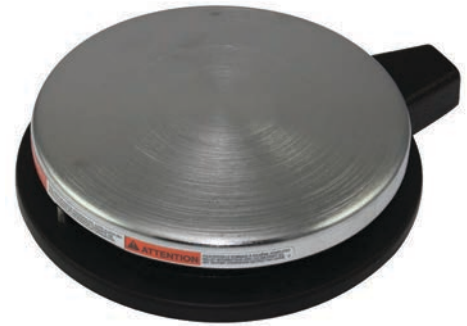
- Round Nickel Chrome Cover
- Heavy Gauge Steel Base plate
- Stain resistant black nitrile Nonskid Base Pad
- The cable shroud provides additional flex protection for the cable

Features & Benefits:

- Designed for long life use
- Operates From Any Direction with moderate pressure
- Extended cable Flex Protection
- Cable shroud provides additional flex protection for cable
- The internal reversible cable clamp accepts a wide range of cable sizes

Options:

- Custom paint finish available on cover
- AirVal models available (See “Premier - Pneumatic AirVal” on page 66 for details)
- Linear models available contact Linemaster for details



Size (Dia. x H):	5.75 x 1.50 In.
Weight:	2.00 lbs.
<p><i>For Dimension Drawings visit www.linemaster.com and click on Line Drawings located under the Guides & Literature Tab</i></p>	

⚠ WARNING SEE PRODUCT WARNING ON PAGE 103						
SPECIFICATIONS (Special variations are available to the O.E.M. on special order on the models listed below)						
AGENCY APPROVALS	EN 60529 Degree of Protection	CATALOG NUMBER	DESCRIPTION	CIRCUIT	FORM	ELECTRICAL RATINGS
	IP20	P32-S	Momentary	SPDT	C	20 A 125-250 VAC 1 H.P. 125-250 VAC
	IP20	P31-SC3 ¹	Momentary	SPDT Wired N.O.	A	10 A 125-250 VAC 1/2 H.P. 125-250 VAC
	IP20	P31-SC36 ²	Momentary	SPDT Wired N.O.	A	

¹Supplied with 6 ft. 18/3 cord with 3 prong series plug. Green lead grounded. ²Supplied with 6 ft. 18/3 cord without plug. Green lead grounded.